

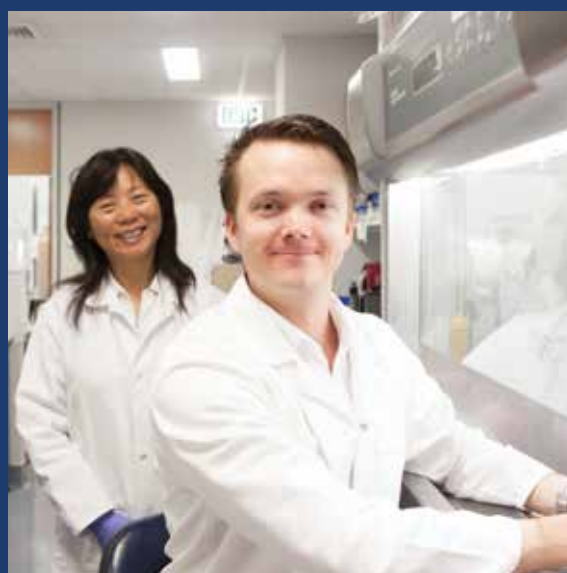
# ANNUAL REPORT

## 2016/2017



AUCKLAND NORTHLAND

Cancer Society of New Zealand  
Auckland Northland Division Inc.



# President's Report

It is with real pleasure that I report to you after my first full year as President of Cancer Society Auckland Northland. It has been a privilege to lead the organisation through a year of change and challenge.



The first thing members may notice is that the 2016/2017 annual report is more compact than in previous years. We have responded to feedback from our membership that the days of expensive and glossy annual reports are over. Our website ([www.cancernz.org](http://www.cancernz.org)) is the primary location for information about our results, achievements and aspirations. Accordingly, our organisation seeks to redirect as much funding as possible away from publications and towards patient services, cancer research and prevention programmes. We are always mindful of transparency and full copies of our financial statements are available on request and will be published once ratified at the AGM.

In regard to our financial results, it is gratifying to report a significant improvement from last year. The accounts show our surplus for 2016/17 to be \$1,089,000 compared to a \$737,000 deficit in the previous year due to a series of successful fundraising initiatives and strong bequest revenue for this result.

I would also like to acknowledge the work of the Davis Carr Cancer Society Endowment Trust and its long-serving Chair Brian Stevenson. The Trust was set up 10 years ago and has been extremely successful in its role to invest and steward long-term assets on the behalf of the Auckland -Northland division. With the help of many farsighted donors, the Ted and Mollie Carr Trust and the Estate of Ernest Hyam Davis, the Cancer Society's endowment fund has grown to a point where it can provide significant support back to the Division in times of need. We have also commenced a regular giving programme as part of our on-going fundraising work.

The Society acknowledges and is grateful to our major sponsor, ANZ. One only has to look at the enthusiasm of ANZ staff and management in and around Daffodil Day to see their commitment to the common cause.

It is impossible to single out a particular highlight for the year; however, it was with real pride that we noted the comments of Emeritus Professor Herbie Newell, our Cancer Research Week guest lecturer from the UK. An article that appeared in the New Zealand Herald in May 2017 under the headline 'World Cancer Expert Praises Cancer Society'. Prof. Newell stated that the work being done at the Auckland Cancer Society Research Centre was "world class". He went on to say, "The balance of top-class research with the nursing support they provide to cancer patients alongside the psychological support is a really unique mix." In the media world where it is sometimes hard to get publicity for our work, we were very grateful for this acknowledgement.

Our organisation remains focused on its core role to provide service and support to those with a cancer diagnosis and their whānau/families. One innovation that has worked well in recent times has been to equip our nurses with laptop computers. This dedicated group, who visit patients at home, are now able to provide a more comprehensive and targeted service.

Staff at the Auckland Cancer Society Research Centre continue to explore the medical mysteries of cancer. Whether it is in early stage drug development and discovery or through the facilitation of clinical trials of new therapies, we are certain that our investment is making a difference.

Prevention remains a critical area and our team continue to work with external agencies as well as local and central government to change health policy with a view to reducing cancer incidence. They have, as a particular focus, a commitment to the Maori and Pacific communities who still feel the disproportionate effects of cancer.

Domain Lodge can accommodate up to 50 patients and their supporters each night and provides almost 20,000 bed nights for patients over the course of the year. The wonderful team never lose sight of their 'home away from home' motto, which underpins the care and comfort for all our guests.

The Board has recently completed two sessions analysing New Zealand's future cancer landscape and future opportunities for our Division to maximise our support of patients and whanau and our impact on cancer research and clinical trials. This work will be refined and inform our future Board strategy.

In conclusion, I would like to thank my fellow Board members for their support and guidance over the year and our CEO and management staff. On behalf of the Board I also offer my thanks to the dedicated staff of the division for working so hard to help us towards our mission and the final and most important thank you is to the countless members, volunteers, donors and contributors who give so much. Our togetherness is what keeps us strong and keeps us going forward.

A handwritten signature in black ink that reads "Jonathan Koea". The signature is written in a cursive, flowing style and is positioned above the printed name.

**Jonathan Koea**



# 2016/2017 Highlights

## Standardised packaging legislation adopted

Cancer Society have been leaders in the campaign for standardised packaging for the past few years. This year the Government committed to this important legislation being adopted. This means from March 2018 all branding will be removed from cigarette packets and the health warning will be more predominant. Standardised packaging is a huge milestone for public health as research shows it will reduce the number of young people who take up smoking and increasing the number of smokers who permanently quit.



## Walking Stars 2016

Our wonderful night-time walking half marathon, Walking Stars, generated half a million dollars for Cancer Society, with over 4,000 individual 'stars' enjoying a fabulous stroll through the central city. Elsewhere we had so many amazing people running, cycling, head shaving, skydiving, Bollywood dancing; you name it – generating incredible support for our community.



## Connected Nurses

Providing a relevant and responsive service to those with a cancer diagnosis is always our goal. Setting up our nurses with laptop computers means they and their patients have immediate access in the home to more information and resources. Together with our psychologists, Cancer Society offers those affected by cancer a comprehensive support framework. Last year our staff visited more patients and provided more support sessions than ever before.

## Cancer Research Week 2017

Our Cancer Research Week focused on the theme 'Cure for Cancer: Myth or Reality?' Keynote speaker Prof. Herbie Newell gave insightful presentations to research staff, health professionals and the public. His commentary was that the research work programme carried out at the Auckland Cancer Society Research Centre was second to none. He cited the US based clinical trial of an ACSRC developed drug called PR104 as being a prime example of the important international collaborations that put local researchers at the forefront in their field.



## Volunteers

Cancer Society is truly grateful to have hundreds of volunteers who regularly contribute to patient care, transport, fundraising, advocacy and administration – no job is too big or too small.



# Supportive Care

Thanks to your support, people with cancer and their whānau/families were able to get the help they needed, at the time in their lives when they needed it most.



**3,293**

**CALLS ANSWERED**

by experienced nurses on the cancer information helpline



**6,158**

**HOME VISITS**

made by Cancer Society nurses to patients



**34,206**

**PHONE CALLS**

made by cancer patients to Cancer Society nurses



**13,450**

**CANCER SOCIETY INFORMATION BOOKS**

distributed



**1,080**

**PEOPLE**

attended Cancer Society group support sessions



**2,163**

**PSYCHOLOGY SESSIONS**

provided to patients and whānau/family

# Volunteers

Volunteers provide essential support and practical help to cancer patients and whānau/families including:



**20,679**

**VOLUNTEER HOURS**

given to help support cancer patients including...



**868**

**CANCER PATIENTS**

were driven to



**4,612**

**CANCER TREATMENTS**



**2,451**

**HOMEMADE MEALS**

cooked by volunteers for patients too unwell to cook for themselves

# Domain Lodge

Domain Lodge offers Northland patients and their support person a place to retreat to after time spent at the hospital for treatment. With well equipped kitchens and comfortable lounges, it is important for patients to have the comfort of a home-like environment.



**6 WEEKS**

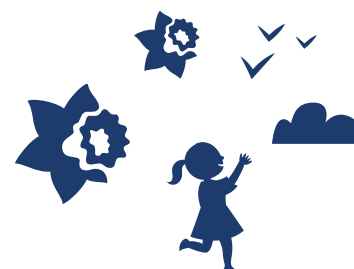
is the average stay at Domain Lodge



**18,841**

**BED NIGHTS**

Domain Lodge offered a home away from home for patients and their support person



# The Divisional Board



Stuart Bauld



Peter Browett



Mike Findlay



Jonathan Koea  
(President)



Shaun Laffey



Mac Leauanae  
(Vice President)



Andrew Macann



Bruce Macdonald



Paul Shanahan



Leah Watson QSM



John Whittaker

---

## Northland Highlights

**Thanks to your support, people across the wider Northland area were able to receive access to cancer information and support services.**

This year, Northland DHB has extended its oncology service up to Kaitiāia. Your generosity has allowed Cancer Society Northland to put Yellow Shirt volunteers in place to support that service, in the same manner that they support the Oncology Unit in Whangarei.

Our volunteers continue to provide strong support for all of Cancer Society Northland's activities. The fundraising team have led especially colourful, creative and successful events this year, all supported by volunteers.

The nursing service has undergone an evaluation and options for change have been presented to strengthen the service.

In the lead up to the 2017 general election, the health promotion team have led a series of political meetings, with politicians being invited in for a 'cuppa tea and a conversation'.

We're continually strengthening relationships with local Māori stakeholders in order to better meet the needs of Northland Māori affected by cancer.



## Northland Regional Committee

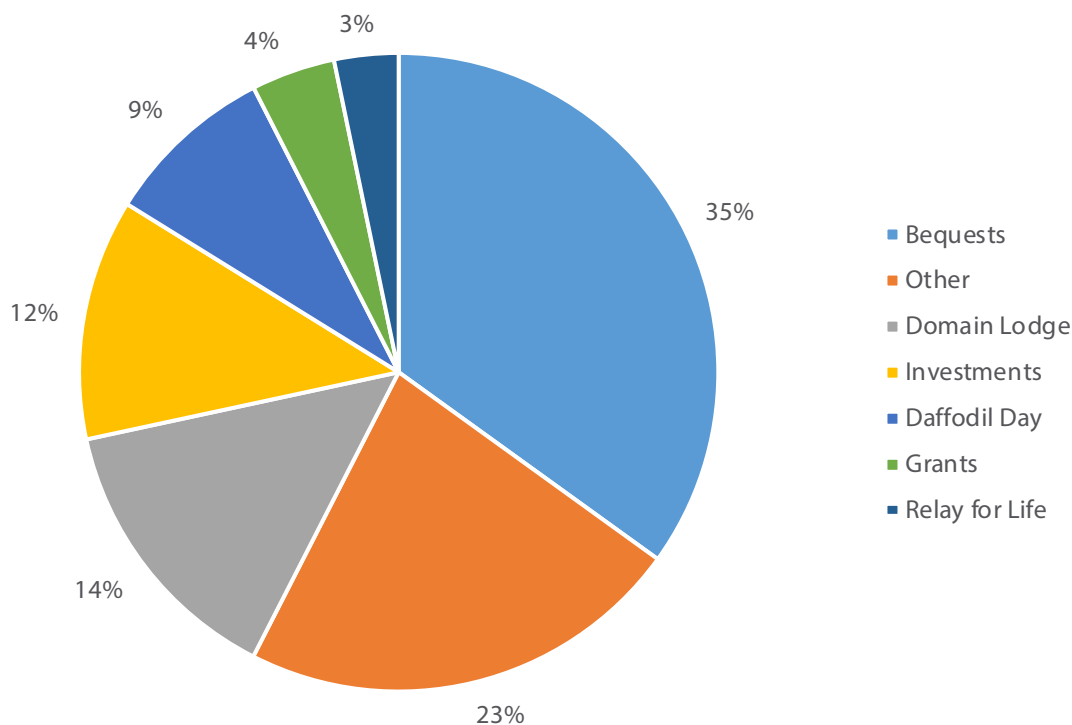
---

Marie Berghan  
Leah Watson  
Ada Brown  
Lee Iwashita  
Mary Carthew  
Martin Brooker  
Merle Newlove

# Financial Summary

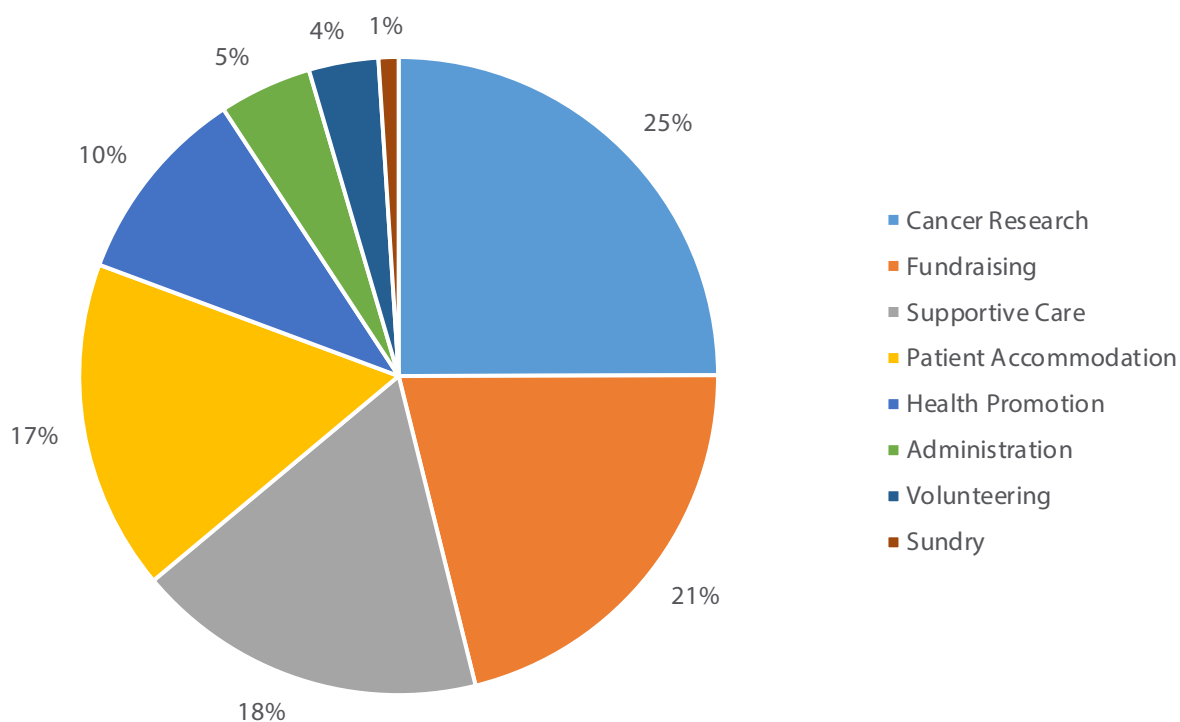
## How We Raised Funds in 2016/2017

New Zealanders continue to generously support those causes close to their hearts. We are ever grateful for the support offered to Cancer Society from our generous donors. Funds received 2016/2017 came from:



---

## How We Used Funds in 2016/2017



# Acknowledgements

## Trusts & Foundations

- The Lion Foundation
- Oxford Sports Trust
- Pelorus Trust
- New Zealand Community Trust
- Four Winds Foundation Ltd
- NZ Lottery (National)
- COGS Manukau
- COGS Papakura Franklin
- COGS Rodney North Shore
- COGS Waitakere
- COGS Whangarei/Kaipara
- Constellation Communities Trust Limited
- Nessbank Trust
- Reed Charitable Trust
- Room-Simmonds Charitable Trust
- Sir John Logan Campbell Residuary Estate
- Ted & Mollie Carr Travel Fund
- Ted and Mollie Carr & Estate of Ernest Hyam Davis Trust
- The North & South Trust Limited
- The Trusts Community Foundation
- Lady Alport Barker Trust
- James Brown
- John Mayo
- A K Franks Charitable Trust
- Barbara Florence Gillies Charitable Trust
- Laurence William Nelson Trust

## Life Members

- The Honourable Justice Cooper
- Mr Michael Horton CNZM
- Mr Russell McIlroy
- Mr Carrick Davidson
- Mrs Joan Swift QSM JP
- Mr Murray MacCormick
- Mrs Anne Sinclair
- Mrs Elizabeth Morgan
- Mrs Jennifer Thomson
- Dr Tom Marshall
- Mr Jim Dufficy
- Mr Knox Laird
- Mr Merv Norman
- Mr Nigel Brown
- Mr Geoffrey Clathworthy \*
- Rev. Douglas Kidd \*
- Dr G C Hitchcock \*
- Mrs Marjorie Davidson \*
- Mrs Enyth Holdgate \*

*\*deceased*

## Davis Carr Cancer Society Endowment Trust

The Davis Carr Cancer Society Endowment Trust is named after two visionary beneficiaries: Sir Ernest Davis, Chairman of Cancer Society Auckland (1935 -1948) and his daughter Mollie Carr and her husband Ted. Through their estates a joint lead gift was made to establish the Trust.

Gifts received by the Cancer Society for the specific purpose of the Davis Carr Cancer Society Endowment Trust are not spent, but instead invested prudently by the Society in perpetuity in the Davis Carr Domain Lodge Endowment Trust. In years that the Cancer Society needs additional income for Domain Lodge and its core patient services (other than funds raised for annual budget), the Society will apply to the Trustees of the Endowment Trust for a percentage of the net income derived from this enduring fund.

**Trustees:** Mr Brian W Stevenson, Mr D E Murray MacCormick, Mrs Leah Watson, Mr Chris Blincoe, Mr G Nigel K Brown.

Thank you to everyone who donated to the Davis Carr Cancer Society Endowment Trust in the last financial year.

**Cancer Society Auckland Northland gratefully acknowledges those who left a gift in their Will during the last financial year. Last year 62 extraordinary people bequeathed a total of \$4.12 million to support the work of Cancer Society. Their legacy helps create a better future for our community.**





## Auckland

Domain Lodge  
1 Boyle Crescent, Grafton  
PO Box 1724, Shortland St  
Auckland 1140  
Phone 09 308 0160  
Fax 09 308 0175  
info@akcansoc.org.nz  
facebook.com/cansociety

## Northland

Daffodil House  
73 Kamo Rd  
PO Box 8100, Kensington  
Whangarei 0145  
Phone 09 437 5593  
Fax 09 437 5602  
Toll free 0800 366 066  
northland@akcansoc.org.nz

## Auckland Cancer Society Research Centre

Faculty of Medical & Health Sciences  
University of Auckland  
Private Bag 92019, Auckland  
Phone 09 373 7599  
Fax 09 373 7502