

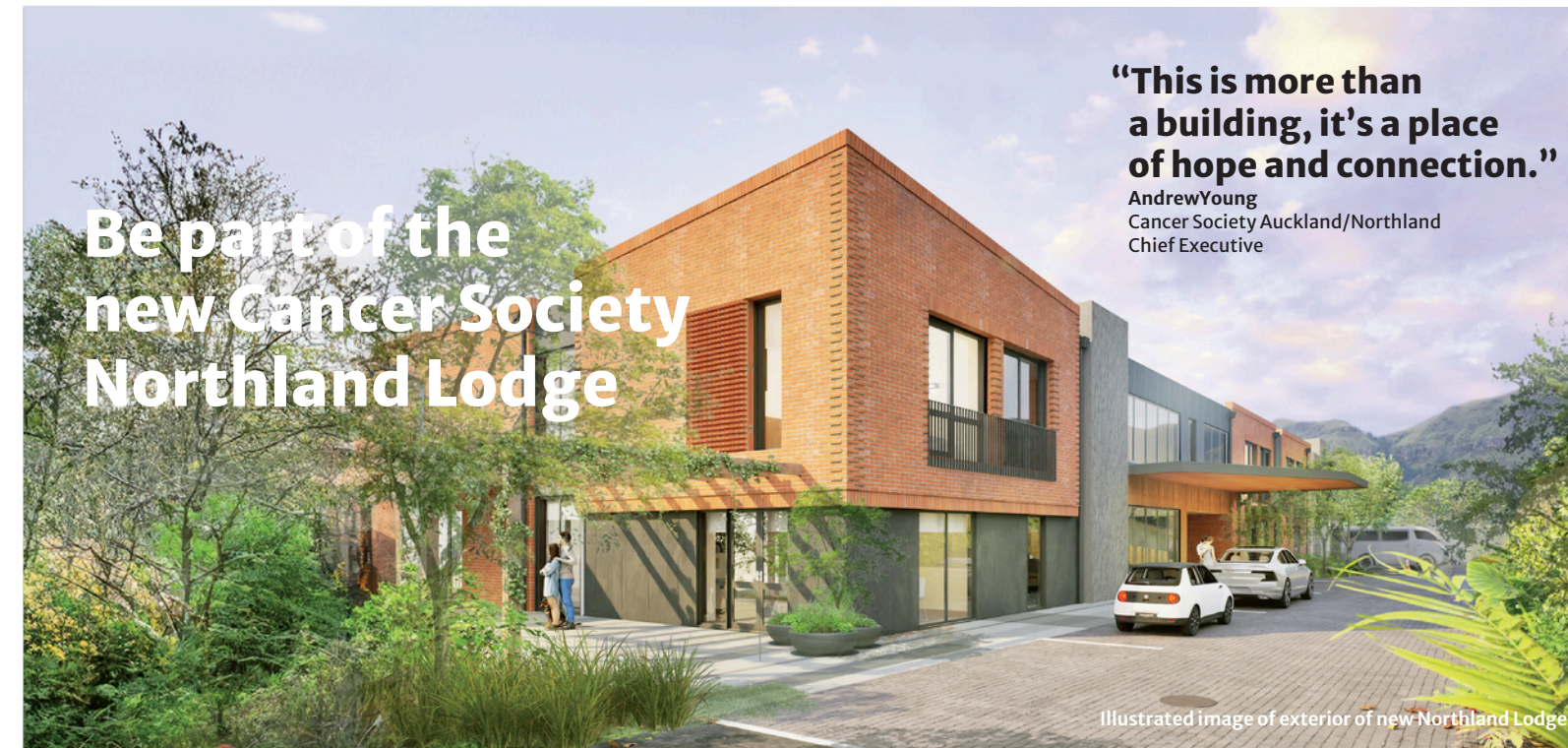
Stand with us and help create something extraordinary

Thanks to generous early supporters we have raised 80% of the funds needed. We need your support now to get us across the finishing line.

Help us create this crucial space for families facing cancer. Be part of something truly meaningful that will leave a lasting impact for generations to come.



Illustrated image of lodge bedroom.



**“This is more than
a building, it’s a place
of hope and connection.”**

Andrew Young
Cancer Society Auckland/Northland
Chief Executive

Illustrated image of exterior of new Northland Lodge.

Why this new lodge matters

Whangārei Hospital will soon be able to offer Northlanders radiation treatment for many cancers.

Hundreds of cancer patients and families who make exhausting trips to Auckland for treatment will be able to receive that more locally. Many Northlanders however, still live hours from Whangārei Hospital, making our new accommodation crucial.

The new Cancer Society Lodge will be life-changing for families facing cancer in Northland.

- 20 modern bedrooms for comfort and privacy
- Communal spaces for connection and support
- Walking distance to Whangārei Hospital’s Jim Carney Cancer Centre
- Inspired by the much-loved Domain Lodge in Auckland and thoughtfully adapted for Northland’s unique needs



Illustrated image of reception area.



These milestones represent the current plan; however, as is typical in construction projects, they are subject to change. We will keep our supporters updated.