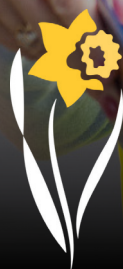


# CANCER SOCIETY AUCKLAND NORTHLAND

# ANNUAL

# REPORT

# 2023/24



**Cancer  
Society**

Te Kahui Matepukupuku  
o Aotearoa

Daffodil Day volunteers, Serena and Nicola raising funds to help keep Cancer Society's vital services running.



# PRESIDENT'S REPORT



**CANDACE KINSER**

President / Cancer Society  
Auckland Northland

**This report marks my fourth as President of the Cancer Society Auckland Northland Board. Once again, it's an opportunity for me to reflect on our central mission to "reduce the incidence and impact of cancer in Aotearoa, New Zealand" with Auckland and Northland our area of focus.**

Distilling this mission down to its simplest form, our charity exists to support those in need. Something we'd be unable to do without you, our supporters. Key to ensuring we achieve this ambition is utilising donor funds to deliver the most suitable and needed care to those with cancer.

To hold ourselves accountable to the most appropriate application of funds, I was keen to introduce a dynamic feedback survey when I became President. In the words of American investor and philanthropist Warren Buffett, "feedback is a gift." That's why we've implemented a simple yet effective five-star rating system, allowing those using our services to tell us how we're doing.

Every month, we survey the hundreds of cancer patients who have been the recipients of the wrap-around care the Cancer Society Auckland Northland provides. These services include our free accommodation at Domain Lodge, our volunteer driving programme, community nurses and psychological counselling and advice.

In FY 23/24, I'm proud to say that Auckland and Northland cancer patients have rated our free services an average of 4.75 out of five stars. Overall, that's outstanding. We review all feedback, noting how we can work to continually refine the care and compassion shown to patients and their whānau.

Our volunteer driving programme is one of the standouts in these surveys, often receiving top marks (five out of five) from people in real need and utilising this service. In fact, our volunteer driving programme is continually in huge demand, which is why we are always looking for more volunteer drivers.

Often receiving a close to perfect score is also our free accommodation offered at Cancer Society's Domain Lodge for patients referred to us by their specialist or local hospital. Our 'home away from home' space provides a sanctuary for people needing to travel long distances to receive lifesaving medical care in Auckland.

I'd like to take this opportunity to acknowledge Health Minister Shane Reti for increasing Government support to help cancer patients needing to travel across the country/ motu for care. The boost to the National Travel Assistance will assist patients with expenses such as accommodation and petrol costs, often a barrier for those on limited income.

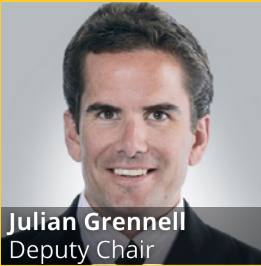
The Government has also started work on providing the long-awaited LINAC radiation machine at Whangarei Hospital, meaning many Northlanders will be able to receive treatment closer to home from 2026, as opposed to travelling to Auckland Hospital. Cancer Society is exploring building a new accommodation lodge in Whangarei to support those needing to be away from home while receiving treatment. We can only do this with public fundraising and support from our donors, so we once again thank you for your ongoing help.

**Candace Kinser,**  
President Cancer Society Auckland Northland

## AUCKLAND NORTHLAND DIVISIONAL BOARD MEMBERS



**Candace Kinser**  
Chair



**Julian Grennell**  
Deputy Chair



**Dr Ben Lawrence**



**Tame Hauraki**



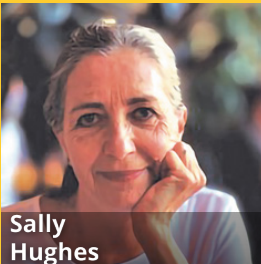
**Dr Richard Sullivan**



**Debbie Evans**



**Louisa Kraitzick**



**Sally Hughes**



**Ken Lotu-Liga**

## The effectiveness of the services you help provide

During the Annual Review, CSAN consistently received top ratings from over 2,000 service user surveys on AskNicely, reflecting our commitment to providing the best possible experience across all Cancer Society services.

Service type	Average Rating (out of 5)
Accommodation (Domain Lodge)	4.74
Driving Service	4.94
Social Work	4.72
Nursing	4.68
Psychology	4.67

"Staff members are super friendly and approachable. They have made this journey just that little more easier and stress free."

"The regular communication was appreciated. This meant the nurse was able to give good advice for every stage."

"I'm treated as an individual person and not a number."

"When you're going through something like this, it's just so good to have kind, caring people to talk to."

"Friendly staff, quick, easy communication via email. Clean and tidy rooms. Secure carpark. Overall great experience. We have stayed several times."



# CEO'S REPORT



## ANDREW YOUNG

Chief Executive Officer  
Cancer Society Auckland  
Northland

**Cancer Society Auckland Northland operates in one of the most culturally diverse areas in Aotearoa, New Zealand. One thing that unites us across the region (and, indeed, the motu/country) is that almost everyone has a cancer story – either about themselves or someone they love.**

One in three New Zealanders will likely be affected with cancer in their lifetime. It's a sobering statistic. However, it's reassuring to know that the Cancer Society is a charity that Kiwis know, trust, and have willingly supported through volunteering and donations for 95 years.

Without your help, we simply wouldn't be able to continue our work of reducing the impact of cancer in this country.

In fact, we're not just a charity that people know – we're a charity that people develop a close and meaningful bond with, a friendship.

Last year, I sadly farewelled a donor who I had got to know over several years. He was a quiet man, kept himself to himself, and faced several bouts of cancer – a true Kiwi battler. We were introduced when I phoned to thank him for a one-off, generous donation he made. It was then that he told me he'd been a guest at Domain Lodge in 2010 after surgery for prostate cancer.

He also shared with me that he felt he failed at school due to not being academic. He was better with his hands and liked to keep busy. Over the years, he owned and ran orchards, building a hugely successful produce business.

In 2022, the cancer returned and last year, he passed away. It was then we were notified about his final act of quiet generosity – he'd left CSAN a bequest from his estate. My unassuming friend's legacy to the Cancer Society will help thousands of New Zealanders for generations to come, allowing us to extend our free services and look to build an accommodation lodge in Northland.

I salute and thank all our donors who help make our mission achievable – it doesn't matter if your gift is small or large, it all counts and goes to help those in need.

And I salute my dear friend.

**Andrew Young,**  
CEO / Cancer Society Auckland Northland

# SUPPORTING WORLD-LEADING CANCER RESEARCH



**"For someone considering a donation to Cancer Society, I would say that by donating you become a part of the solution. Your donation directly funds the research that can change the current cancer statistics for the better." - Anastasiia, Research Fellow (ACSRC)**

The partnership and rich history between Cancer Society Auckland Northland and Auckland Cancer Society Research Centre (ACSRC) is well-established. CSAN founded the centre more than 60 years ago and now contributes over \$2 million a year to critical research in Aotearoa New Zealand.

The ACSRC has several key ambitions when it comes to its work, including the development of new drugs for clinical trial and improving the use of existing drugs. World-renowned as a leading anti-cancer drug development lab, the ACSRC has brought 14 drugs to clinical trial, published over 2,000 scientific papers, and plays a crucial role in the preparation of the next generation of scientists.

Part of the current faculty staff is ACSRC Research Fellow, Anastasiia, whose work focusses on the most common gynaecological cancer, endometrial cancer.

"We're aiming to find biomarkers for early detection of endometrial cancer and for this purpose we are exploring two different avenues.

First, we are looking at the signals that are sent directly from the tumours and can be detected in the blood sample.

This can lead to a simple, minimally invasive and affordable clinical test that is less stressful and easier to get for our patients.

Our second approach will examine whether a certain bacteria in the uterus could indicate the presence of endometrial cancer. If we can establish a link between a particular bacterial group and cancer, we can design another non-invasive diagnostic tool that can be implemented and used routinely in the clinic.

Our ultimate goal is to improve the overall experience and diagnosis for patients with endometrial cancer. By providing minimally invasive diagnostic tools, we are ensuring that the patients get the care they need as early as possible."

Her passion for research is down to both personal experience with the disease and a deep desire to have a meaningful impact on people's lives.

"It's very rewarding to think that the discoveries that we make in the lab can be translated into real life application, improving the quality of life for our patients and their families."



# THE IMPACT OF YOUR SUPPORT

Standing side by side with Kiwis going through cancer

**“I’m lying in bed while my kids are asleep, and wife’s asleep, thinking man, am I going to make it until Christmas?” – Luke, 38-year-old dad and husband**

As Luke buckled over with severe abdominal pain, he had no idea that his entire world was about to be turned upside down.

“I was thinking, man, this is not good. The doctor’s holding my hand, and he goes, ‘Luke, you’ve got stage 4 bowel cancer.’

The first thing that you ask is, ‘Am I going to die?’ Because your heart’s racing, palms are sweaty, and you feel like you’re going to pass out.”

Due to the urgent nature of Luke’s condition, an emergency bowel resection was scheduled to remove much of the cancer-ridden bowel and insert a stoma. But the bad news didn’t end there – the cancer had metastasized to Luke’s liver and his right lung.

As Luke and his family grappled with the devastating news, Luke knew he had to tell his young sons. But explaining his diagnosis to them was every parent’s worst nightmare.

“My boys at the time were five and eight. My young fella, Theo, he’s really loud and rambunctious. Whereas my eldest boy, Hunter, is very studious and mild-mannered.

I wanted them to know that yes, I’ve been afflicted with something that has a potential outcome to take my life, but everyone’s going to do everything they can to make sure I’m here as long as possible.”

It’s during devastating moments like these that your support brings wraparound care and crucial support.

As Luke went through difficult conversations, surgeries, and numerous rounds of chemotherapy, Cancer Society Nurse Estelle was right there, providing free expert advice, care, and a listening ear when Luke needed it most.

“As my treatment went on, I had regular catch ups [with Nurse Estelle]. We’d have these courageous conversations. It’s another ear and another point of view, and it’s unbiased.

It really calms the mind, because things run away real quick when you are left to your own devices or without an answer.”



Luke, Cushla, Theo (6) and Hunter (9)

Luke is just one of over 27,000 New Zealanders diagnosed with cancer every year. With the support of our incredible donors, together we can be there for them every step of the way. Thank you so much for your support.



Cushla and Luke in hospital

# GAELYN & BRIAN’S LIFE CHANGING GIFT

**After many years of putting off redoing he will and with no children of their own - Gaelyn had an epiphany that changed everything.**

“It came to me like a bolt out of the blue! I knew there was Cancer Society and I really wanted to get to the root of cancer. So, I decided that we should leave our money to help the scientists working on cancer research.”

Gaelyn and her husband Brian have sadly been touched by cancer many times through friends and family. Gaelyn’s own mother passed away from breast cancer, and this year Brian’s beloved sister Val faced a challenging brain tumour diagnosis.

“It’s really touched our hearts and our lives. We’ve known a lot of people who have faced cancer.”

“So, when Brian and I depart this world, the money from the house and everything we’ve got will go towards cancer research. It was a relief because my husband has been wanting me to update my will for many years. I felt a big pressure off my shoulders knowing the impact our gift will have in the future.”

For Gaelyn, the decision to leave money towards cancer research is one she doesn’t hesitate to share. In fact, she would encourage anyone thinking about putting the Cancer Society in their will to take that next step.

“I would absolutely encourage people to leave a gift to cancer research. We’ve told other folks who don’t have immediate children or family what we are doing and how important research is. I’ve let my family know what we are doing as well.”

Gaelyn and Brian’s wonderful gift will ensure ground-breaking cancer research continues, helping to protect future generations of New Zealanders.

Cancer Society is incredibly grateful for special gifts like Gaelyn and Brian’s, and the wonderful legacy donors who make such a difference to our work.



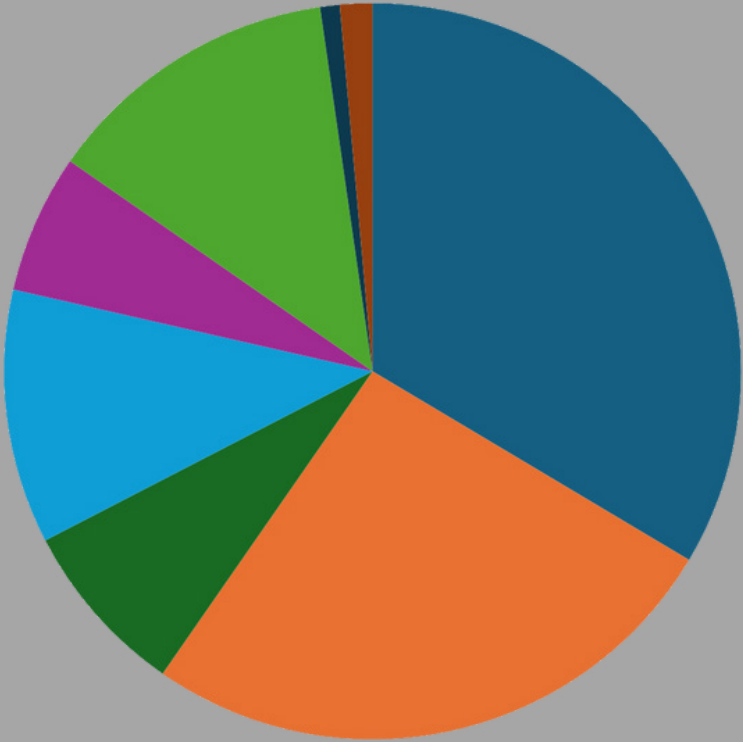


# FINANCIAL SUMMARY

## \* REVENUE

for year ending 31 March 2024

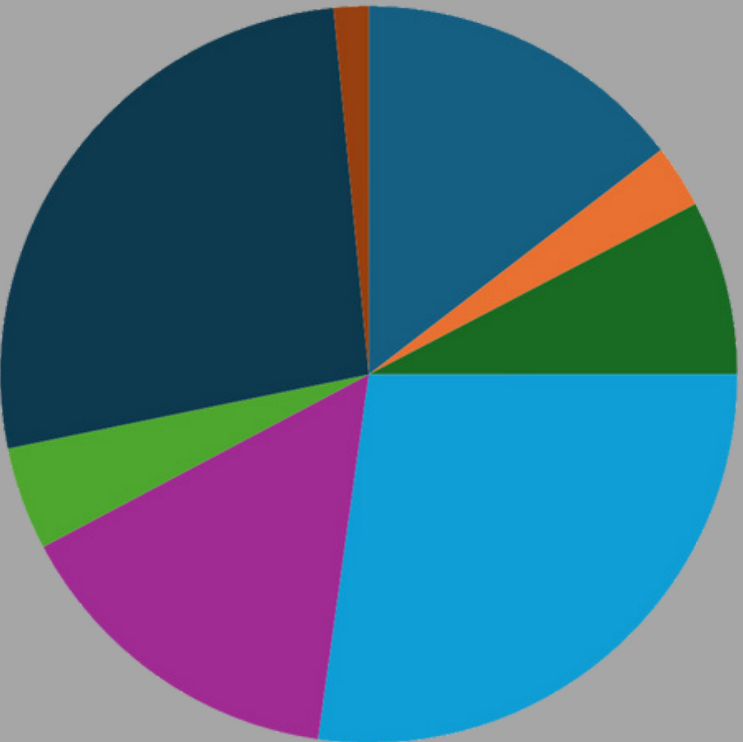
Bequests	7,151,338
Other Fundraising	5,558,528
Domain Lodge	1,651,433
Investments	2,379,449
Daffodil Day	1,301,476
Grants	2,779,401
Operations	183,053
Relay for Life	302,715
<b>Total</b>	<b>21,307,393</b>



## \* EXPENDITURE

for year ending 31 March 2024

Accommodation	2,476,961
Admin	471,390
Cancer Prevention	1,300,590
Fundraising	4,628,797
Research	2,557,586
Sundry	769,635
Supportive Care	4,540,110
Volunteers	260,533
<b>Total</b>	<b>17,005,602</b>



# A YEAR OF YOUR IMPACT

3,744

Total number of referrals made to Cancer Society supportive care workshops, services and programmes.

6,530

Total number of face-to-face contacts made by Cancer Society staff.

2,080

Total number of psychosocial support sessions provided for individuals with cancer and their whānau.

3,905

Total number of drives made by Cancer Society volunteer drivers taking patients to and from treatment.

53,421

Total number of contacts made by Cancer Society staff to individuals with cancer and their whānau.

31,050

Total number of patient nights provided at Domain Lodge.

153,289

The approximate number of km travelled by Cancer Society volunteer drivers taking patients to treatment.

**None of these activities and services are possible without your generosity – thank you for your support.**



# ACKNOWLEDGEMENTS

## TRUSTS AND FOUNDATIONS

Birkenhead Licensing Trust  
The Lion Foundation  
Lottery Northland Community Fund  
The North and South Trust  
The Trusts Community Foundation  
The NZ Community Trust  
The Dragon Community Trust  
The Trillian Trust  
Blue Sky Community Trust  
Blue Waters Community Trust  
Constellation Community Trust  
Grassroots Trust  
Pub Charity

## PROUDLY MANAGED BY PERPETUAL GUARDIAN

A K Franks Charitable Trust  
Lady Alport Barker Trust  
Margaret Olive Russell Charitable Trust  
Nessbank Trust  
The Estate of Ernest Hyam Davis and the Ted and Mollie Carr Endowment Trust  
The Room-Simmonds Charitable Trust  
NR and JH Thomson Charitable Trust

## PROUDLY MANAGED BY PUBLIC TRUST

The Reed Charitable Trust  
Louisa and Patrick Emmett Murphy Foundation  
Barbara Florence Gillies Charitable Trust  
Martha Helen Baldwin Trust  
Pauline Gapper Charitable Trust  
The Zelda Roberts Charitable Trust

## OTHER SUPPORTERS

The National Assistance Fund  
Foodstuffs Here for NZ

## LIFE MEMBERS

Brian Stevenson  
Sabine E Muller  
Edna Johnson  
John Patridge  
Jessica Buddendijk  
National Library Of NZ  
Jan M Dalley  
Elaine Black  
Heather Wheeler  
Nola E Cooze  
Michaela Baxter  
Anthony Bacon  
John L Mayo  
Lavinia McMillan  
John Shanks  
Guy H Marks  
Karene Gore  
Stuart Bauld  
Jennifer Thomson  
William A Denny  
Bruce Baguley  
Nigel Brown  
Russell McIlroy  
Carrick L Davidson  
Murray MacCormick  
Michael Horton  
Thomas H Marshall  
Linda F Holloway  
Dale E Siebert  
Knox Laird\*  
Anne A Sinclair  
Joan B Swift  
Jonathan Koea  
Patrina Hardie  
Judy Dysart  
Graham Scahill  
Michael Sharp  
Ravinder Parmar  
Olive Shanks  
Peter Shepherd

Moya Barr  
Akshay Desai  
Jatin Patel  
Patricia Noonan  
Maureen Clooney  
Elizabeth C Morgan  
Leone Burgess  
William Wilson  
Arvind Dullabh  
Lorraine Hampton  
Professor J C Probert\*  
Rev. Douglas Kidd\*  
Merv Norman\*  
Marjorie Davidson\*  
Henry Perkins\*  
Enyth Holdgate\*  
Geoffrey Clayworthy MNZM\*  
George Hitchcock OBE, DFC\*

\* Deceased

We would also not be able to provide crucial care and support to New Zealanders facing cancer without the kindness, enthusiasm and generosity of our regular monthly givers and also our incredible partners:

## MAJOR SPONSORS

ANZ

## SUPPORTING PARTNERS

Kings Plant Barn  
Auckland Radiation Oncology  
Giltrap Newmarket  
Canopy Cancer Care

# PREVENTING CANCER BEFORE IT STARTS



The Cancer Society Auckland Northland Cancer Prevention team continues to focus on the benefits of vaccination, early detection and screening, along with advocating for awareness of the risk tobacco/vaping, alcohol, obesogenic food, and ultraviolet ray exposure all pose to developing cancer.

We've built community connections to raise awareness on the Human Papilloma Virus (HPV) and the HPV vaccination programme for eligible young people. Through our CSNZ HPV toolkit our team promoted the toolkit kōrero when speaking to community and Māori health providers, community groups and at health events and expos. The toolkit has been a useful resource for spreading the message about how important the HPV vaccine is against cancer.

In September 2023, the cervical screening programme introduced an HPV self-testing swab kit to encourage more women to participate in screening. There have been no changes to the breast or bowel screening programmes.

A Government announcement in December confirmed that the Smokefree Environment and Regulated Products (Smoked Tobacco) Amendment Act would be repealed. The impact of the repeal has jeopardised our national goal of a Smokefree Aotearoa 2025, however we continue to advocate and work towards this.

We held a vaping workshop with Aotearoa Māori Netball Tamaki. We worked with the kotiro/girls to voice their opinions on youth vaping in their communities. They produced a submission to the national Aotearoa Māori Netball Association to include vaping in their existing smokefree policy.

The Kia Ora E te iwi programme has been beneficial for our team in sharing our messages on how whanau can be advocates within their own family on reducing their risk of cancer.

We have challenged new retail liquor licenses in partnership with our communities including alcohol outlets applying to be specialist vape shops.

Our team looks forward in the next year to building new connections within our Tai Tokerau and Tamaki Makaurau communities whilst maintaining the already strong existing relationships.



# A YEAR IN EVENTS

The events calendar was jam packed, exciting, and successful. Relay for Life was back and better than ever after a three-year hiatus with over 1,700 people taking part in events in Auckland and Northland.

Games Fair returned for another year at Auckland's The Cloud seeing a significant increase in ticket sales from the previous year and provided ticket holders with a brilliant weekend of tabletop gaming.

Jump for Cancer, the Auckland Marathon, the Kerikeri Half Marathon, Round the Bays, The Longest Day Golf Challenge and our first Marathon in a Month campaign were fantastic, and the events team loved getting to meet the wonderful people who chose to take on a challenge to ensure no one goes through cancer alone.

ZEST, an alcohol-free long lunch held in the beautiful Ellerslie Racecourse Stables was a new event for 2023 and received great feedback for the spectacular food, amazing auction items, informative talks and activations regarding health promotion and cancer prevention.

Daffodil Day 2023 was fabulous with the country turning yellow for the month of August. A highlight being a Cancer Society and ANZ collaboration with Kiwi comedy royalty, Dai Henwood, who opened up about his own cancer journey and encouraged the nation to support the charity via a live broadcast comedy show.

Overall, this year has been a successful one in the events space. Not only have crucial funds been raised for those needing support in our communities, but our events showcased our services, informed the public on how we can help, and provided our supporters with a positive and fun experience. We can't thank the wonderful fundraisers and event participants who made this year such a triumph.



Two of our amazing Jump For Cancer participants.



Games Fair photo wall at The Cloud.



Cancer Society Events team with the ZEST chefs.



Cancer Society runners at Round The Bays.



The Shankers at Waitakere golf course taking part in the Longest Day Golf Challenge.



Daffodil Day volunteers collecting on the streets.



Tropicana Sunrise team at Relay For Life.





# So that no one faces cancer alone.

- Free services available to patients and whānau
- 0800 226 237 (Any cancer, any question)
- Community Nursing
- Psychological Support
- Social Work
- Driving Service



**Cancer  
Society**

Te Kahui Matepukupuku  
o Aotearoa

Peter one of our volunteer drivers.