

2024 Annual Report

Cancer Society of New Zealand

Whanganui - Rangitīkei

- Waimarino Centre





Chairperson's Report



As I write this annual report I look back and realise this is the tenth report I have written as President of our centre. On reflection we need new people with good governance skills to keep our centre going. With the changes to the Incorporated Societies Act it has become increasingly apparent that people are not coming forward in governance roles and quite a few Not-for-Profit Organisations are struggling to maintain officers. The new rules will again put more and more pressure on those that do.

This year the growth in the individuals and the businesses which have supported our local centre has been phenomenal. A true reflection of the outstanding dedication of our staff members and all of our volunteers. To you all, I offer my humblest thanks. You might not know what it means to see people and organisations come together to enable us as a centre of the Cancer Society do what we are here to do. But, it is very appreciated by all concerned. The increased use of Cancer Society Services has been exceptional. We have seen the ever-increasing demand for use of the centre continue to grow; it has been a very busy centre of operations.

To all of our staff you again have been outstanding; you have succeeded in getting our Centre of the Cancer Society recognised throughout our region. Our staff members are ably assisted by all of you, our volunteers. Without you all, what is required would never be completed. I need to thank you all again for your loyalty shown, the volunteers throughout our region and rural areas. It is to be highly commended.

I wish to convey thanks to all of our staff members for their time and efforts in their respective roles for our Centre. Also, to acknowledge some staff who have left which includes Theresa and Cassie. But also, to welcome our newbies Kate, Amy, and Fatima to the team. To Jane, Rachel, Kerri you all are leaders in what you do for our Centre in your individual roles and I wish to express my sincere thanks to you all for everything you achieve for the Cancer Society.

To all of the individuals and businesses who have maintained their partnership plans with the Cancer Society, I offer my sincere gratitude for your continued support. I must acknowledge those new people and businesses partners who have come on board. May we have a long and meaningful relationship. Your continued assistance has allowed us to achieve the operational goals that were set in place for this year.

Last but not least, I would like to take this opportunity to thank the executive Jenny, Marie, Gillian and Brian for all of their work and support that they have contributed over the last twelve months or so.

As I mentioned last year, we will have ever more increasing compliance issues placed before us which will have to be dealt with, your committee members await the developments of this to see what the future will hold for us all.

Graeme Baker QSM
President



Centre Report

We are incredibly lucky to have such a supportive and caring community, always willing to support our fundraising ventures, and who give regularly knowing that their support is being spent wisely caring for those in our community who need it. The support from the team at the Central Districts office has also helped to alleviate stresses that arise in terms of funding, so a big thank you to them too!

The staff here are amazing - those past and present. They come to work and do the best they can in their respective roles, and have created a warm and inviting space for people of all walks of life to come into. We are very proud of our team, their work and the environment we have created here.

Our Volunteers are our biggest resource, and we could not do what we do without them. Their involvement in the office, driving clients, helping with our massive fundraising events is phenomenal! A really big thank you to them all!

Fundraising and Events

Daffodil Day - The success and strength of the appeal comes from the significant support received from volunteers across the Whanganui, Rangitīkei and Waimarino areas. Daffodil Day work happened across the month of August with pre-sales deliveries, school activities and community fundraising. The event made a total of \$81.5k. The highlight for the centre was the birth of a new event for the Whanganui region, and has blossomed into planning for an annual youth-led “project runway” style fashion show. Over sixty high school aged entrants repurposed and re-designed a designated couture wedding dress, donated by local bridal boutique, Etcetera. With a focus on sustainability, designs were only altered with fabric from pre-loved clothing, they were also required to include a Daffodil within their design. The fashion show created visibility for our organisation through a channel that captures the attention of a younger target audience who may not otherwise have that connection to the Cancer Society yet.

Other local events for the year made \$85,124.

Relay For Life - Whanganui Relay For Life 2024 was a great success as we moved back to overnight Relay. With 48 teams and 650 participants we had exceptional community engagement. We were blessed with beautiful weather, and a great atmosphere due to fantastic community support. Timing trackers were introduced this year which



created an exciting energy for those who were competitively minded and offered motivation for those setting personal goals. The total raised was close to \$88.9k. Whanganui Cancer Society are grateful to the support from local businesses, especially Mitre 10 Mega and House of Travel for providing incredible raffles, with all proceeds going to the Whanganui Relay. We welcomed many new business partners this year. It has been an inspiring process to build relationships and connections with so many community-minded people. In Whanganui it was especially heartening to see businesses making the most of their Relay For Life involvement by orchestrating lots of team-building fundraising activities to give back to the community, and supporting one another throughout the 20-hour event.

Supportive Care

Individual support for clients and their families continues to be a core part of supportive care, with home and office visits, providing emotional support, advocacy, information and financial assistance. We have introduced a coffee and chat support group and attendance has started to grow. This provides a place to share feelings and experiences and receive non-judgmental support from others who 'just get it'. Both our Men's and Women's support groups continue to be well attended, covering topics that support their experience with cancer.

The massage clinic continues to be popular and we have added an extra clinic due to demand. Massage is now also being offered in both Taihape and Waimarino.

Our breast prosthesis providers continue to be available, giving women easier access to a wider variety of garments and prostheses locally.

Transport to Treatment by our wonderful volunteers is in huge demand, without this service some clients would not be able to receive their treatment.

Plans for the next year include rolling out volunteer home assistance and visiting, and continuing to grow our support groups.

Volunteers and Transport

At the beginning of this year this position was a combined/dual role, but as we said farewell to Theresa it was decided to split the role into its own categories. In doing this we welcome Fatima Khanzada as the Volunteer Coordinator and Kate Booth as the Transport Coordinator.

Our centre is forever grateful for the support provided by volunteers. Without them, our services simply could not operate. In the 2023/2024 year we had 318 Volunteers registered with us, and they volunteered a total of 6,463 hours! Our client drivers completed a total of 1,107 trips locally, to Palmerston North and Hutt Valley, and covered 177,026kms!

Our volunteer roles include Reception, Special Events, Health Promotion, Supportive Care, Client Drivers, Maintenance and a lot more. We welcome everyone from all walks of life that want to make a difference in the community and have some time to spare. An outstanding effort by everyone. Thank you!

Toitu Te Whenua - Cancer Prevention and Health Promotion

2023/2024 saw the Cancer Prevention team continue to work hard in the community, building on the networks made and working alongside complimentary community organisations to reduce the incidence and impact of Cancer in Aotearoa New Zealand.

The SunSmart Gazebo and Sunscreen Pole loan scheme continues to be a very popular resource for our communities, with over 50 bookings to hire this equipment in the previous 12 months.



The SunSmart schools program encourages engagement and education within our school community alongside educational opportunities to reduce UV harm. Central Districts continue to lead the way nationally, with 63% of schools in the Whanganui region accredited. The SunSmart Schools grant has run through its first cycle and Mosston School were the grateful recipients of the full \$2,000 grant which they have put towards a new shade sail for their playground. Pictured are the Mosston School new entrants under the sail. We are now working towards increasing the profile of this grant to encourage more applicants for 2024 and a wider distribution of the funds.

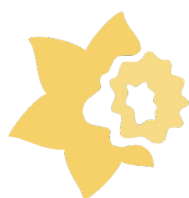
Submissions to council also play a huge part in the role of the Health Promoter. These provide an opportunity to create change at governance level while promoting awareness of the impact councils and their policies have on the health of their own communities.

Submissions made on behalf of the Cancer Society in the past 12 months include communication to the Whanganui District Council for the Open Space and Physical Activity Strategy, the Ruapehu District Council in support of the Smokefree and Vapefree Policy 2023 and the Rangitikei District council in support of the development of a Smokefree Vapefree policy. Alongside these submissions various letters have been sent to ministers while collaborative work continues to support policy change, build awareness and provide advocacy for community voice.



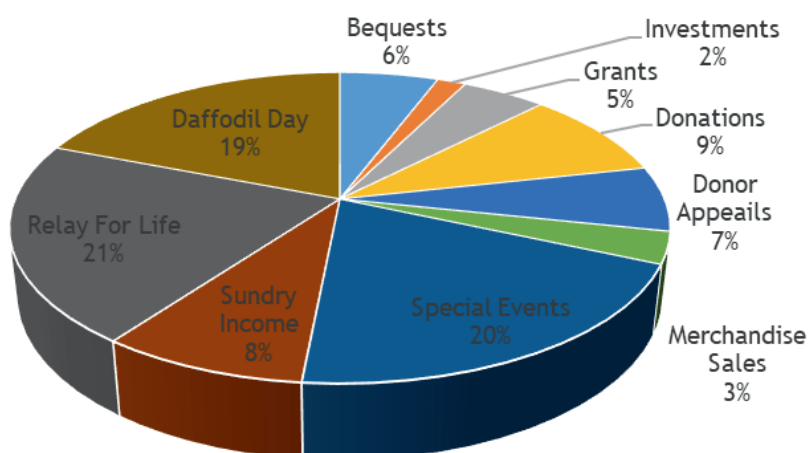
Mosston School new entrants under their new shade sail!





Income and Expenses

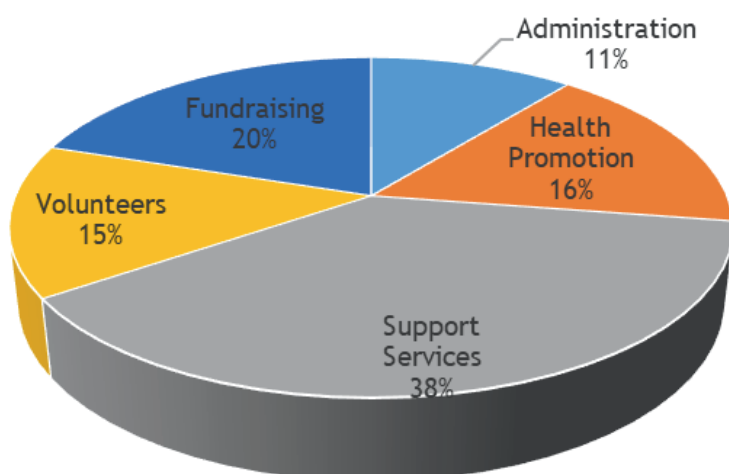
Income - \$427,271



| | |
|----------------|----------|
| Bequests | \$24,587 |
| Investments | \$7,138 |
| Grants | \$21,108 |
| Donations | \$39,232 |
| Donor Appeals | \$29,001 |
| Special Events | \$85,124 |
| Sundry Income | \$36,641 |
| Relay For Life | \$88,933 |
| Daffodil Day | \$81,528 |

Total Income \$427,271

Expenses - \$554,295



| | |
|------------------|-----------|
| Administration | \$60,315 |
| Health Promotion | \$91,480 |
| Support Services | \$211,301 |
| Volunteers | \$80,450 |
| Fundraising | \$110,749 |

Total Expenses \$554,295

Net Deficit \$127,024





Bequests and Grants Received

Grants

1st April 2023 to 31st March 2024

- Community Organisation Grant Scheme (COGS)
- JBS Dudding Trust
- NZ Community Trust
- TG MacCarthy

Grand Total: \$21,108

Bequests

We are sincerely grateful to those who have left bequests. We thank those individuals and families for their generosity.

We acknowledge the estate of:

- AW Hamer
- C & V Thrush
- JF Kane
- PA McCulloch
- M Trudgeon

Total bequests: \$24,587

Executive

President:
Graeme Baker

Vice President:
Jenny Vickers

Members:
Brian Milham (from September 2023)
Gillian White
Kath Pinker (until September 2023)
Marie Baker

Staff

Centre Liaison:
Jane Burgess

Supportive Care Coordinator:
Kerri Dewson-Pratt

Health Promoter:
Cassie Pui (until December 2023)
Amy McVerry (from January 2024)

Office Administrator:
Rachel Pedley

Volunteer and Transport Coordinator:
Theresa Webster (until December 2023)

Volunteer Coordinator
Fatima Khanzada (from January 2024)

Transport Coordinator
Kate Booth (from January 2024)

Event Coordinator:
Jess Edmonds



Whanganui - Rangitīkei - Waimarino Centre
3 Koromiko Road
PO Box 7116
Whanganui 4541
(06) 348 7402
enquiries.wgi@cancercd.org.nz

Office Hours
Monday - Friday 8.30am - 3pm
Saturday - Sunday Closed

