



**Cancer
Society**

Te Kāhui Matepukupuku
o Aotearoa

Taranaki Centre Annual Report 2025

www.cancer.org.nz



PRESIDENT'S REPORT

As I sit down to write my first President's report I must firstly acknowledge the departure of Monique Shaw who sadly had to resign from the Executive due to personal reasons in February. Monique has done an amazing job as President of the Taranaki Centre for the past several years. Her commitment and enthusiasm were always evident and we will all miss her greatly.

We are indeed blessed in Taranaki to have our huge team of volunteers and our dedicated staff who continue to amaze us with the work that they do in health promotion, supportive care and, of course, event organisation and fundraising. We have had a full complement of staff for the year and this is reflected in the great work that they have achieved.

It is a real tribute to the generosity of Taranaki people and the sense of community that, despite a very difficult economic climate, we have surpassed all expectations with our fundraising efforts this year. At last year's AGM we were just two weeks away from Daffodil Day, our big fundraising event of the year, and thanks to the huge effort of staff and volunteers and the generosity of the community we made a total income of \$219,398 (year before was \$139,919). Our other big fundraiser of the year is Relay For Life and this was held on a spectacularly beautiful day in March. There was such a wonderful atmosphere in the TET Stadium in Inglewood with a great sense of camaraderie and celebration. It was particularly good to see a record number of schools being involved this year and hopefully they enjoyed themselves and will return next year. The income from the event reflected the fabulous atmosphere and we made a total of \$213,519 (year before was \$148,967).

By the time this report is read at the AGM it will be two weeks after the Cape Egmont Half Marathon. We are enormously indebted to Nicky Smith and her team for organising this annual event and the funds that it generates for the Cancer Society.

Unfortunately we have had a few issues with our building in New Plymouth. We have had ongoing issues with a leaking roof which we are hopeful is now fully repaired. Our heating system failed and last winter was difficult for the staff having to huddle around portable radiators. We are very pleased to have received a grant which covered the cost of a new heating system which was installed just before this



winter. We had a major problem with the blocked sewage pipe which caused backflow of sewage throughout a significant area of the building. This was very unpleasant and inconvenient for the staff and we are grateful for their tolerance and for the work that went in to have everything cleaned up.

Despite successful fundraising events for the year it has been a difficult year financially. The cost of providing our services has inevitably risen significantly, and in the past year our costs exceeded our income. It seems that the Cancer Society is increasingly dependent on bequests as a source of income. As a result of our compromised financial position Central Districts granted us a three-month reprieve from paying our Service Delivery Costs. We are now in a better financial position but it seems very likely that the situation will recur in the future.

The Executive is still working towards and getting legal advice regarding the changes to our Constitution that will be needed to comply with the Incorporated Societies Act 2022. We need to be compliant by April 2026. You will have received a separate paper that we have prepared to be distributed prior to the AGM discussing whether we should re-incorporate as a Society or whether we should take the other option of becoming a Centre Collective. We are hopeful that the membership will make a decision today as to which direction we go.

Lastly I would like to thank the amazing staff that we have in the Taranaki Centre and also all the other members of the executive team for all the work that they put in behind-the-scenes and for their wise counsel and for their support of me since I took over the President's role.

Warm regards,

Ian Smiley

President of The Taranaki Cancer Society

YEAR OF OUR IMPACT



474
new clients
offered
support



34
programmes
delivered
with 502
participants



1,799
contacts
with our
supportive
care team.



618
therapeutic
sessions
with clients.
Massage,
reiki,
reflexology,
and yoga.

KIA ORA – E TE IWI

Donna Akariri was employed as the Kia Ora – E Te Iwi Kaiārahi Hōtaka based in the Taranaki centre from September 2023 to April 2024. In June 2024, we appointed Vadelia Wirihana-LeGeyt as a Kia Ora – E Te Iwi kaimahi. Vadelia has been working closely with team lead, Janine Luke-Taamaru in Taranaki to network with local Māori health providers, other service providers and Te Whatu Ora to promote Kia Ora – E Te Iwi in Taranaki. We have held two Kia Ora – E Te Iwi events with more planned for the coming year.

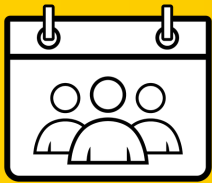
FUNDRAISING HIGHLIGHTS



\$213.5K
Taranaki Relay
For Life
fundraising



\$219.4K
generous
donations from
our 2024
Daffodil Day
appeal



\$61.4K
raised through
other special
events in our
community



\$100.8K
through
individual and
group donations



\$67.4K
grants provided
from our incredible
funders

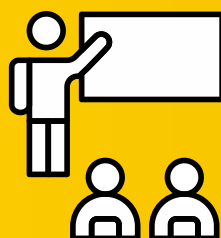
CANCER PREVENTION WORK



38
SunSmart
accredited
schools, 36%
of our region



70
sunscreen
pole bookings



97
health education
sessions held with
community
groups/organisations

VOLUNTEER HIGHLIGHTS

**5,599km**

driven by
volunteers taking
clients to
appointments

**2,747**

hours dedicated
by volunteers
equal to 53
additional unpaid
staff hours per
week!

**112**

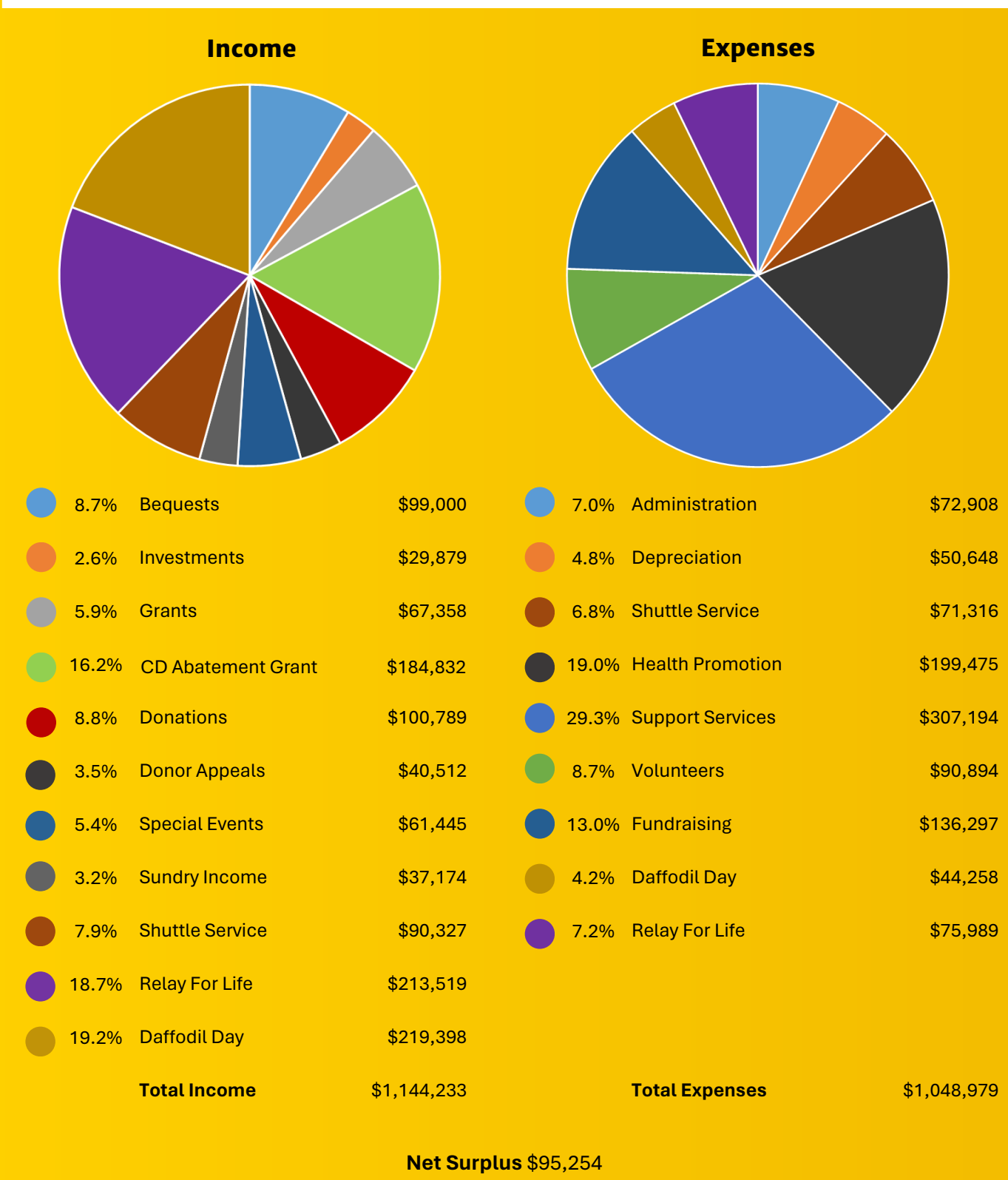
volunteers/groups logged
hours and participated in
tasks to support the
Centre

The Difference our Volunteers Make!



With four years of service under her belt, Christine brings a wealth of experience from her 32-year career in a school office. Her journey into volunteering began with a friend's suggestion, and knowing several people who have faced cancer journeys, she felt compelled to help. Christine's time with the Cancer Society has been filled with heartwarming moments. One of her favorite memories is assisting a lady in finding the perfect wig. The joy on the woman's face when they found the right one was priceless. Christine feels valued and appreciated by the staff, which adds to her sense of fulfillment. When asked why someone should volunteer for the Cancer Society, Christine highlights the friendly and supportive office environment. She emphasizes the growing need for volunteers due to the increasing number of cancer patients and the perpetual shortage of funding. "There's always a need for more hands to support those on their cancer journey," she says.

INCOME AND EXPENSES



Explanatory Note

Due to XRB (External Reporting Board) requirements, some figures may differ slightly from what has been previously reported.

THANK YOU

The Taranaki Cancer Society Centre Incorporated would like to gratefully acknowledge all those who have supported us financially and in kind through grants, bequests, and sponsorships over the past year.

 ANZ Bank New Zealand Ltd

 Aotearoa Gaming Trust

 BSeen Media Ltd

 Cape Egmont Half Marathon

 COGS Grant

 Devon Hotel

 Estate B Jones

 Estate J W B Brown

 Fonterra Collingwood

 Four Winds Foundation

 Kathleen McPhillips Charitable Trust

 Lotteries Grants Board

 New Plymouth Club

 Noel Yarrow Taranaki Cancer Society Trust

 Novotel Hotels

 NZ Community Trust

 Pelorus Trust

 Pub Charity Limited

 Smith Brothers

 Taranaki Foundation - Bruce Carter

 The Lion Foundation



Executive

President:

Monique Shaw (until February 2025)
 Dr Ian Smiley (Interim from February 2025)

Committee Members:

Dr Ian Smiley (Vice President, until February 2025)
 Paula King
 Jane Snowden
 Jill Burge
 Rebecca Eaton
 Matthew Landrigan
 Brendan Clough

Staff

Shuttle Driver:

Andrew Stewart

Relief Shuttle Driver:

Colin Warwick

Supportive Care:

Denise Fleming

Centre Liaison/Service Delivery Manager (Cancer Prevention, Equity, Kia Ora - E Te Iwi programme):

Janine Luke-Taamaru

Administrator:

Karen Barkla

Health Promoter:

Kate Dawson

Events Coordinator:

Lisa Russell

Volunteer Coordinator:

Talia Greiner (from January 2025)
 Tracy Brooke (until November 2024)



Hāwera Centre

62 Victoria Street
Hāwera 4610
Open Tuesday - Thursday:
10am - 3pm

Taranaki Centre

71 Lorna Street
New Plymouth 4310
Open Monday - Friday:
9am - 3.30pm

Contact us

T | (06) 757 3006
E | enquiries.tar@cancercd.org.nz



Cancer Society

Te Kāhui Matepukupuku
o Aotearoa