



Cancer Society

Te Kāhui Matepukupuku
o Aotearoa

Whanganui – Rangitikei – Waimarino Centre Annual Report 2025

www.cancer.org.nz



CHAIR'S REPORT

As this is my first year serving as President, I consider it a great privilege to take on this role. I would like to express my sincere gratitude to Graeme Baker, who served as President for the Whanganui Cancer Society for the past ten years. Graeme is now taking his extensive knowledge and experience to the role of President for Central Districts Division of the Cancer Society, which includes Taranaki, Whanganui, Gisborne, Hawke's Bay and Manawātū - a position that will undoubtedly keep him very busy.

Over the past year, we have seen an inspiring level of support from individuals and businesses across our region. This support from the community continues to motivate us, and while you may not always see the direct impact of your support, please know that it is instrumental in helping us fulfil our mission. With demand for our services continuing to rise the Whanganui Cancer Society has remained a vibrant hub, responding proactively to the growing needs of our community.

Our staff have once again shown exceptional dedication and play a vital role in ensuring our Centre remains recognised and valued throughout the region. This work is made possible by the steadfast support of our volunteers, whose loyalty and commitment are truly commendable. I extend my heartfelt thanks to each of you. A special acknowledgment goes to Jane, Rachel, Kate, Jane and Fatima for your continued leadership and commitment—your efforts are deeply appreciated. We warmly welcome our new colleagues Belinda and Megan, and look forward to the energy and insights you bring. To our departing team members Amy McVerry, Aimee Nottingham & Kerri Dewson-Pratt, thank you for your service and contributions.

To all the individuals and organisations who support and partner with us—thank you. Your support has been essential in helping us meet our operational goals and serving our community within the Whanganui Rangitikei Waimarino region.

Finally, I would like to express my sincere



appreciation to the Executive Committee—Gillian, Marie, Brian, Nerrily, and Kelvin—for your invaluable guidance and unwavering support over the past twelve months. Your dedication has been truly appreciated.

Warm regards,

Jenny Vickers

President of Whanganui - Rangitikei - Waimarino Cancer Society



YEAR OF OUR IMPACT



266
new clients
offered
support



30
programmes
delivered
with 171
participants



618
therapeutic
sessions
with clients.
Massage,
reiki,
reflexology,
and yoga.



1,639
contacts
with our
supportive
care team

KIA ORA – E TE IWI

The last 12 months have seen the focus for Kia Ora – E Te Iwi on recruitment and promotion of the programme. In June 2024, we appointed Vadelia Wirihana-LeGeyt as a Kia Ora – E Te Iwi kaimahi based in Palmerston North. Vadelia has made initial contact with local services and contacts people, to initiate discussions regarding the Kia Ora – E Te Iwi programme being held in Whanganui and surrounding communities of the province.

FUNDRAISING HIGHLIGHTS



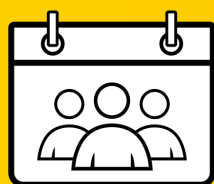
\$110.1k

Whanganui Relay
For Life
fundraising



\$87.2k

generous
donations from
our 2024
Daffodil Day
appeal



\$20.9k

raised through
other special
events in our
community



\$32.5k

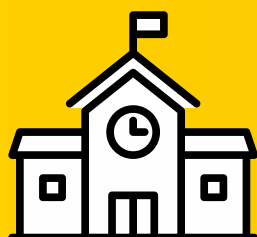
through
individual and
group donations



\$356.8k

grants provided
from our
incredible funders

CANCER PREVENTION WORK



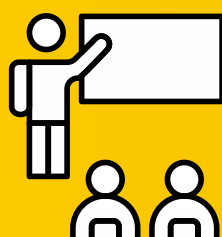
44

SunSmart
accredited
schools, 72.1%
of our region



88

sunscreen
pole bookings



72

health education
sessions held with
community
groups/organisations

VOLUNTEER HIGHLIGHTS



187,185km

driven by
volunteers taking
clients to
appointments



6,273

hours dedicated
by volunteers
equal to 124
additional unpaid
staff hours per
week!



318

volunteers/groups logged
hours and participated in
tasks to support the
Centre

The Difference our Volunteers Make!



Rachael Guttery has been a steadfast volunteer for the Cancer Society in Whanganui for approximately six years. Her journey began when she returned home to Whanganui around six and a half years ago, and she has since been a passionate advocate for Cancer Society.

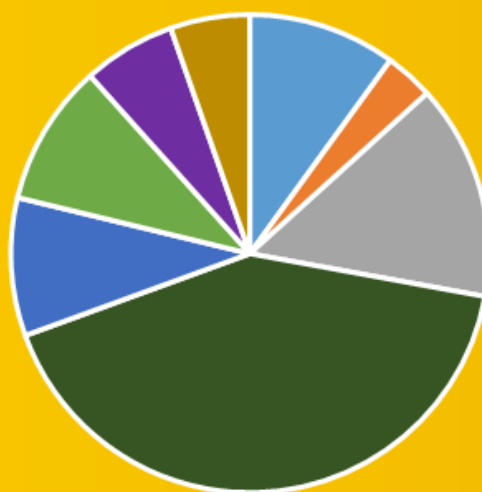
Rachael plays a vital role in the Cancer Society's fundraising efforts and is deeply involved in several key activities such as the Daffodil Day Street Appeal and a committee member of Relay For Life. Rachael actively participates in organising and executing this annual event, which raises significant funds for cancer research and support. As a committee member, Rachael helps plan and execute the Relay For Life events, a highlight of her volunteer work. Rachael's motivation to volunteer stems from her desire to give back to the community. Her involvement with the Cancer Society allows her to support individuals and families during challenging times. The Society's support during her mother's illness left a lasting impression, motivating her to honor her mother's memory through her volunteer work. Volunteering has not only allowed Rachael to contribute to the community but has also enriched her personal life.

INCOME AND EXPENSES

Income



Expenses



6%	Bequests	\$51,000	10%	Administration	\$60,180
6%	Grants - Operational	\$53,255	3%	Depreciation	\$19,846
35%	Grants - Capital	\$303,500	15%	Health Promotion	\$87,756
4%	Donations	\$32,529	42%	Support Services	\$250,239
3%	Donor Appeals	\$22,177	9%	Volunteers	\$56,228
11%	SDC Abatement Grant	\$98,546	10%	General Fundraising	\$57,672
2%	Special Events	\$20,874	6%	Relay For Life	\$37,731
5%	Rental Income	\$42,150	5%	Daffodil Day	\$32,354
6%	Sundry Income	\$52,591			
13%	Relay For Life	\$110,125			
10%	Daffodil Day	\$87,150			
Total Income		\$873,898	Total Expenses		\$602,006

Gross Surplus	\$271,891
Less Capital Grants	(\$303,500)
Net Operating Deficit	\$31,609

Explanatory Notes

1. Merchandise activity for Relay For Life and Daffodil Day are included in the events above. In the Audited Financial Statements the merchandise income is in Revenue from commercial activity.
2. RFL Grants received (\$9,620) are included in the Relay For Life income figures above. In the audited Financial Statements RFL grants are included in Grants Received Operational.
3. Grant income above is \$9,620K less than what shows in the Audited Financial Statements. This is due to RFL grants showing in Relay For Life income.
4. Sundry Income is made up of: NTA Patient Travel Reimbursement , General Sales, Investment Income, Member Income, and other sundry income.

THANK YOU

The Whanganui - Rangitikei - Waimarino Cancer Society Centre Incorporated would like to gratefully acknowledge all those who have supported us financially and in kind through grants, bequests, and sponsorships over the past year.

Community Organisation Grants Scheme
David Jones Motors
Emmett's Civil Construction
Est C M H Campbell
Est C R Benbrook
Est M P Goodman
Est R G Clinton
Est V K Beirne
Four Regions Trust
JBS Dudding Trust

Mitre 10 Mega Whanganui
NZ Community Trust
NZ Lottery Grants Board
PAK'nSAVE
Property Brokers
Rapid Relief Team
Scafit
TG Macarthy
Whanganui Community Foundation
Whanganui District Council



Executive

President:

Graeme Baker (to September 2024)
Jenny Vickers (from September 2024)

Committee Members:

Gillian White (Vice President, from September 2024)
Jenny Vickers (Vice President, until September 2024)
Brian Milham
Kelvin Pratt
Marie Baker
Nerrily Frith

Staff

Events Coordinator:

Aimee Nottingham (from April to September 2024)
Belinda Pilcher (from September 2024)

Health Promoter/Health Educator:

Amy McVerry (to October 2024)
Megan Baldwin-Holly (from January 2025)

Office Administrator:

Rachel Pedley

Service Support Manager People & Culture:

Jane Burgess

Supportive Care Coordinator:

Kerri Dewson-Pratt (to February 2025)
Jane Bilderbeck (from May 2024)

Transport Coordinator:

Kate Booth

Volunteer Coordinator:

Fatima Khanzada



Whanganui Centre

3 Koromiko Road,
Gonville
Whanganui
Open 8.30am - 3pm, Monday -
Friday

Contact us

T | (06) 348 7402
E | enquiries.wgi@cancercd.org.nz



Cancer Society

Te Kāhui Matepukupuku
o Aotearoa