



**Cancer
Society**

Te Kāhui Matepukupuku
o Aotearoa

Hawke's Bay Centre Annual Report 2025

www.cancer.org.nz



CHAIR'S REPORT

The year ending March 2025 marks my third year as President. While Hawke's Bay continues to recover from the impact of Cyclone Gabrielle, we remain focused on supporting those affected by cancer—recognising that environmental disruptions can compound the challenges people face during treatment and recovery.

Our region consistently reports higher-than-average cancer rates, highlighting the need for a well-prepared and sustainable organisation. This year, we welcomed Jacqueline Supra as our new Fundraising Administrator—a critical role that had been vacant for some time.

We also welcomed Laura Billing to the Board, bringing valuable financial and governance expertise. Our 2024/25 Board includes Mike Madden, Paul Davies, Paul Sanders, and Jess Trew. We thank Mike Wong, who retired last AGM, for his six years of service and his significant contributions to our building projects.

We're pleased to report that our office has now received final building compliance sign-off from the Hastings District Council. However, financial sustainability remains a key concern, with ongoing deficits in our forecast budgets. This remains a top priority for the Board in the coming year.

We also present a revised Constitution for ratification at this meeting, in alignment with the new Incorporated Societies Act.

To our staff, board, members, and volunteers—thank you. Your support and dedication continue to make the work of the Hawke's Bay Cancer Society possible.

Warm regards,

David Trim

President of Hawke's Bay Cancer Society



YEAR OF OUR IMPACT



571
new clients
offered
support



53
programmes
delivered
with 404
participants



1,880
contacts
with our
supportive
care team.



323
therapeutic
sessions
with clients.
Massage,
Reiki,
reflexology,
and yoga.

KIA ORA – E TE IWI

The province of Hawke's Bay has embraced the Kia Ora – E Te Iwi programme and our kaiarahi hotaka, Vadelia Wirihana-LeGeyt has worked hard to establish relationships with community providers to establish networks and promote the Kia Ora – E Te Iwi programme. We are looking forward to upcoming Kia Ora – E Te Iwi hui at Omahau Marae and in the Waipukurau community in the next financial year.

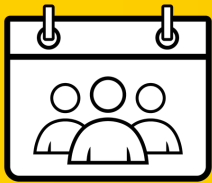
FUNDRAISING HIGHLIGHTS



\$109.2k
grants provided
from our
incredible funders



\$151.3k
generous
donations from
our 2024
Daffodil Day
appeal



\$97.4k
raised through
other special
events in our
community

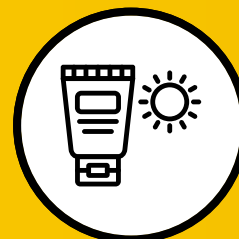


\$49.1k
through
individual and
group donations

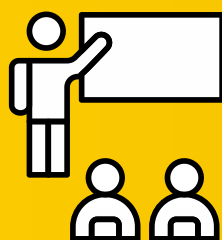
CANCER PREVENTION WORK



50
SunSmart
accredited
schools, 47.6%
of our region



83
sunscreen
pole bookings



167
health education
sessions held with
community
groups/organisations

VOLUNTEER HIGHLIGHTS



11,424km

driven by
volunteers taking
clients to
appointments



2,230

hours dedicated
by volunteers
equal to 42
additional unpaid
staff hours per
week!



217

volunteers/groups logged
hours and participated in
tasks to support the
Centre

The Difference our Volunteers Make!

When you walk through the doors of the Cancer Society in Hawke's Bay, there's a good chance you'll be greeted by the warm smile of Chris King. Chris has been volunteering with the Cancer Society since November 2020, taking on roles as a receptionist, executive minute taker, fundraising assistant, and stepping in wherever she's needed.

Chris's journey with the Cancer Society is a personal one. After losing her partner to cancer following a long illness, she knew she wanted to give back in a meaningful way. "The work of the Cancer Society is invaluable," she says simply.

Volunteering has brought Chris many memorable moments. She especially enjoys the camaraderie with staff and fellow volunteers, and the energy of big events like Daffodil Day or the recent steam train excursion fundraiser. "It feels good to be doing something worthwhile."

For anyone considering volunteering, Chris would encourage you to give it a try "It's a fun group to work with, and a really nice organisation to be part of. Plus, there's always a big need for volunteers."

Chris's story is one of resilience, service, and the power of giving back – a true example of how one person can make a lasting difference in their community.



INCOME AND EXPENSES

Income



16.9%	Bequests	\$165,731
7.3%	Donations	\$71,005
10.0%	Regular Giving Donations	\$97,545
15.5%	Daffodil Day	\$151,315
16.6%	Fundraising Activities	\$162,361
14.7%	Investment Income	\$143,962
8.8%	Shuttle Contract	\$86,108
1.4%	Other Income	\$14,027
8.9%	Grant Income	\$87,292

Total Income \$979,346

Expenses



7.7%	Operations & Other costs	\$82,039
3.5%	Daffodil Day Costs	\$37,608
13.7%	Fundraising	\$145,688
38.1%	Support Services	\$406,251
18.1%	Cancer Prevention	\$192,620
9.4%	Volunteers	\$100,145
5.0%	Shuttle	\$53,504
4.6%	Depreciation	\$48,586

Total Expenses \$1,066,441

Net Deficit (87,095)

THANK YOU

The Hawke's Bay Cancer Society Centre Incorporated would like to gratefully acknowledge all those who have supported us financially and in kind through grants, bequests, and sponsorships over the past year.

 Baker Tilly Staples Rodway

 D Georgetti

 Dowdall Trust

 Eastern & Central Community Trust

 First Light Foundation

 Freemasons

 Hawke's Bay Foundation

 Lottery NZ

 Property Brokers

 Pub Charity Ltd

 Retail Systems Hawke's Bay

 Royston Health Trust

 Ruth Petty

 Threads

 Trust House Foundation

 Wool Life



Executive

President:

David Trim

Committee Members:

Jess Trew

Laura Billings (from September 2024)

Mike Madden

Mike Wong (until September 2024)

Paul Davies

Paul Sanders

Staff

Cancer Prevention:

Crystal Lau

Centre Administrator:

Justine Fisher

Centre Liaison:

Pauline Farquhar

Events and Fundraising Coordinator:

Jaki Supra (from May 2024)

Shuttle Drivers:

Dennis Higham

Dave Henderson

Supportive Care:

Darrin Meynell

Gae Redshaw (Wairoa) (until October 2024)

Jenny Schaw (Central Hawke's Bay)

Rebecca Sheppard

Volunteer Coordinator:

Anne Redgrave



Hawke's Bay Centre

801 Francis Hicks Avenue
Raureka

Hastings, 4120

Open Monday - Friday

8.30am - 4.30pm

Contact us

T | (06) 876 7638

E | enquiries.hb@cancercd.org.nz



Cancer Society

Te Kāhui Matepukupuku
o Aotearoa