



Cancer Society

Te Kāhui Matepukupuku
o Aotearoa

Manawatū Centre Annual Report 2025

www.cancer.org.nz



CHAIR'S REPORT

The year began in August last year when we held our Annual General Meeting (AGM) in Levin. We farewelled Robin Benton who had provided an active and generous link between the Manawatū Committee and the Horowhenua. Robin and Jenny enjoyed much of New Zealand from their fabulous motorhome. Sadly Robin passed away in November and Chris Franklyn attended the memorial service.

Our guest speaker at our AGM in Levin was Central District's Chief Executive, Debra Elgar. Debra spoke of the changing presence of cancer in New Zealand, and how it will be placing a greater burden on our community. Debra then spoke of the changes the Cancer Society is planning to meet this ever-increasing burden with a focus on providing support and care in more settings with volunteers to be trained and placed where they can help best. The Centre Committee welcomed a new member from Levin, Lynda Kidd. Lynda's offer to help was very generous, however her circumstances changed and she was unable to attend. Dr Bridget Percy, who had recently moved to the Horowhenua joined our committee in February this year. Bridget is very well qualified educationalist and a member of the Institute of Directors NZ.

This year's AGM will be held in Dannevirke with guest speaker Sheryll Hoera. Sheryl is the General Manager of Tararua Health Group. Sheryl has a great deal of experience in health and has worked with the Cancer Society in several roles to improve how the Cancer Society responds to under-served groups.

The headline achievement for 2025 was the purchase of office space in Dannevirke. Chris Franklyn did a great job settling the purchase of the property expeditiously and has the grateful and full thanks for the Manawatū Centre Committee. The new offices are providing space to offer a greater range of support care in Tararua and a place staff and volunteer can call home as well as support cancer-related services.

In October, we formally adopted a new set of rules to comply with the new regulations for charities at a Special General Meeting. Crafting of the new rules was a long and complex process, and required a lot of thought. Thank you to the Manawatū Committee team that worked through the process to ensure they were fit for purpose under the new regulations. One of the changes in the new rules was to ensure refreshing of the Committee on a regular basis. Members of the Manawatū Centre Committee will retire after two years, retiring by rotation. Each member can serve up to four terms. This will mean that every AGM, half of the members will retire and those eligible for re-election are invited to offer their candidacy.



The success of the 2025 Relay For Life is a credit to the dedicated members of the Relay For Life Committee. The members are volunteers; some like Jo O'Neil also work for the Cancer Society and many employers in the Manawatū. This year's new Relay For Life Committee Chair is Richard Hart. Richard works for Cummins here in Palmerston North and has been a member of the Relay For Life Committee since 2010. Richard has taken on the duties of Relay For Life chair with the generous support of Cummins.

Many thanks to Sushmita Chakravarty who have successfully submitted funding applications to many philanthropic organisations that support the work of the Cancer Society. We also noted that Ozanam House has been well supported by Peter Griffin and Penny O'Leary. Ozanam House continues to meet the demand for accommodation for those who travel to the Manawatū for cancer treatment. The support of Ozanam House is continuing to adapt to the way cancer is being managed by Health New Zealand.

Thank you also to ANZ Bank who continue to be a major sponsor of the Cancer Society.

It has been a privilege to work with this fine group of volunteers who meet as the Manawatū Centre Executive Committee and attend the monthly meetings of the Central Districts Division led by Graeme Baker. My thanks to Aaron Phillips, Ashley Shearer, Bridget Percy, Jo Dean and Penny O'Leary for their steadfast support of the Cancer Society and in particular the staff and volunteers at Addis House, on behalf of those who seek our help and support.

Yours sincerely,

John Waldon

Chairperson of the Manawatū Cancer Society

YEAR OF OUR IMPACT



326
new clients
offered
support



284
therapeutic
sessions
with clients.
Massage,
reiki,
reflexology,
and yoga



2,870
contacts
with our
supportive
care team



59
programmes
delivered
with 490
participants

KIA ORA – E TE IWI

Vadelia Wirihana-LeGeyt is our Kia Ora – E Te Iwi kaiarahi hotaka for Central Districts Division and is based in our Manawātū Centre since June 2024. For the Manawātū area, Vadelia has made amazing progress in forming relationships and engaging with local Māori health providers, Te Whatu Ora and other community services.

There have been three Kia Ora – E Te Iwi programme hui held within the Manawātū:

- Providers Information Workshop, what is Kia Ora – E Te Iwi: Introduction to the programme, held at Addis House, September 2024 (Approx. 15 people attended)
- Jointly hosted with Muaupoko Tribal Authority, Levin and Central Districts Division, held in Levin – December 2024. Kia Ora – E Te Iwi hui held (Approx: 18 people attended)
- Jointly hosted with Whanake Rangitane Trust, Palmerston North and Central District Division; held in Palmerston North. May 2025. Kia Ora – E Te Iwi hui held (Approx: 12 people attended)

Vadelia is working with CS supportive care and the Muaupoko Tribal authority, to establish ongoing 'catch up' groups with those that attended the hui. The group meets at the Cancer Society, Winchester House, Levin, offering a chance to host guest speakers and offer further support and services.

FUNDRAISING HIGHLIGHTS



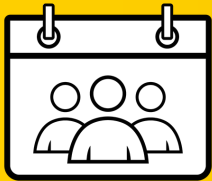
\$391k

Manawatū Relay
For Life
fundraising



\$174.2k

generous
donations from
our 2024
Daffodil Day
appeal



\$74.6k

raised through
other special
events in our
community



\$48.3k

through
individual and
group donations



\$112.5k

grants provided
from our incredible
funders

CANCER PREVENTION WORK



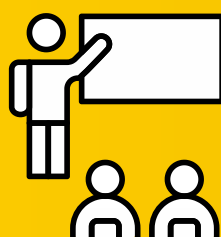
61

SunSmart
accredited
schools, 57.5%
of our region



136

sunscreen
pole bookings



93

health education
sessions held with
community
groups/organisations

VOLUNTEER HIGHLIGHTS



121,439km

driven by
volunteers taking
clients to
appointments



9,377

hours dedicated
by volunteers
equal to 180
additional unpaid
staff hours per
week!



165

volunteers/groups logged
hours and participated in
tasks to support the
Centre

The Difference our Volunteers Make!

Alan Puttock: A Story of Love, Hope, and Service.

Alan Puttock's life has been marked by resilience and dedication. After retiring from 12 years of service with the Red Cross, Alan, now 79, found a new purpose volunteering with the Cancer Society. His journey began with personal loss—his wife, Joyce, passed away from pancreatic cancer three years ago. Alan, a cancer survivor himself, diagnosed in 2011 and cancer-free since 2012, wanted to give back after his own experience with the disease.

Alan met Joyce at 17, and they married in 1964, building a life together with three children and grandchildren. After Joyce's death, Alan felt compelled to volunteer at the Cancer Society, helping patients at the Oncology department. He works at the reception area, booking in patients, guiding them, and offering comfort. His warm, welcoming presence brings a sense of calm to those facing their own cancer journeys.

"I love interacting with people," Alan says. "If I can offer a little hope or light, that's what matters."

Alan's motivation comes from both his cancer experience and the memory of his late wife. Volunteering allows him to honour Joyce's legacy while providing support to others who need it. His greatest joy comes from helping others, sharing stories, and knowing he's making a difference.



INCOME AND EXPENSES

Income



Expenses



2.2%	Bequests	\$26,708
4.9%	Investments	\$59,406
6.3%	Operational Grants	\$75,525
3.1%	Capital Grants	\$36,975
4.0%	Donations	\$48,310
11.3%	Regular Giving	\$135,956
4.9%	Donor Appeals	\$58,664
6.2%	Special Events	\$74,612
10.1%	Sundry Income	\$121,675
32.5%	Relay For Life	\$391,043
14.5%	Daffodil Day	\$174,224

6.7%	Administration	\$97,259
4.6%	Depreciation	\$66,093
16.0%	Health Promotion	\$232,004
41.2%	Support Services	\$596,853
9.4%	Volunteers	\$135,568
11.3%	General Fundraising	\$163,596
7.4%	Relay For Life	\$106,784
2.9%	Daffodil Day	\$41,649
0.7%	Grants	\$10,000

Total Income \$1,203,096

Total Expenses \$1,449,806

Net Deficit (\$246,709)

Explanatory Notes

1. Merchandise activity for Relay For Life and Daffodil Day are included in the events above. In the Audited Financial Statements the merchandise income is in Revenue from commercial activity.
2. RFL Grants received (\$15K) are included in the Relay For Life income figures above. In the audited Financial Statements RFL grants are included in Grants Received Operational.
3. Grant income above is \$15K less than what shows in the Audited Financial Statements. This is due to RFL grants showing in Relay For Life income.

THANK YOU

The Manawatū Cancer Society Centre Incorporated would like to gratefully acknowledge all those who have supported us financially and in kind through grants, bequests, and sponsorships over the past year.

Adamson & Holland

Aylene Hobson Memorial Trust

BM Electronics Ltd

Community Organisation Grants Scheme

Eastern & Central Community Trust

Est C Greenbank

Est D E Ronowicz

Est J E Pierard (Kynaston Charitable Trust)

EST R B Low

Fitzherbert Rowe Lawyers

FMG

GJ Gardner Homes

Mainland Foundation

Monty Fairbrother Trust

NZ Community Trust

NZ Lottery Grants Board

One Foundation

Ozanam House

Pelorus Trust

Property Brokers

The Lion Foundation

Trust House Foundation

Executive

Chairperson:

John Waldon

Committee Members:

Peter Griffin (Deputy Chair)

Jo Dean

Ashley Shearer

Penny O'Leary

Aaron Phillips

Bridget Percy



Staff

Administration:

Fran Harvey

Centre Liaison & Business Services Manager:

Chris Franklyn

Events Coordinator:

Jo O'Neil

Health Promoter:

Jose Gutry

Supportive Care:

Brylee Knowles – Horowhenua

Cherie Rissetto – Tararua

Lois Sinclair- Manawatū

Transport Coordinator:

Kaye Graham

Volunteer Coordinator:

Hayley Puketapu



Manawatū Centre

135 Ruahine Street
Roslyn
Palmerston North 4414
Open 9am - 4pm, Monday - Friday

Winchester House

112 Winchester Street
Levin 5510
Open 10am - 2pm, Monday - Friday

REAP Bluey Building

17 Gordon Street
Dannevirke 4930
Office hours by appointment

Contact us

T | 06 356 5355
E | enquiries.mtu@cancercd.org.nz



Cancer Society

Te Kāhui Matepukupuku
o Aotearoa