



Annual Report 2023/24

Te Kāhui Matepukupuku o Aotearoa
Cancer Society of New Zealand, Wellington Division
Covering Greater Wellington, Wairarapa, Nelson Tasman and Marlborough

Cancer Society of New Zealand

1 in 3 Kiwis will get cancer in their lifetime. We're here to make sure that no one has to face cancer alone.

For nearly 95 years, Te Kāhui Matepukupuku o Aotearoa, the Cancer Society of New Zealand, has been there for Kiwis affected by cancer. With a 'for the community' focus, the Cancer Society is here to help clients and their whānau/family through diagnosis, treatment and recovery.

Cancer Society of New Zealand is made up of six divisions spread throughout the country, supported by a National Office. Together, we are committed to reducing the incidence and impact of cancer in Aotearoa New Zealand.

Cancer Society Wellington Division

Cancer Society Wellington Division covers Greater Wellington, Wairarapa, Nelson Tasman and Marlborough. We are entirely community funded and based, meaning what's raised in the community, supports the community.

Together with our staff, volunteers, local partners and supporters, we are doing everything we can to support those affected by cancer in our communities, including:

- cancer information, support groups and workshops,
- transport to treatment services,
- patient accommodation,
- funding life-saving research and,
- advocating for cancer risk-reducing behaviour.



Chair & CEO Report

We are thrilled to present the Annual Report for the Cancer Society Wellington Division 2023/2024. We would also like to take this opportunity to introduce you to Darryl Carpenter, our new Pou Ārahi (Chief Executive Officer). Darryl comes to us with many years of experience as a senior leader in government and previously as CEO of the NZ Mountain Safety Council.

As you'll see in this report, we've had a busy year providing support and delivering our services to people and communities, while also reviewing and resetting where we need to focus our activities and attention. Our Centres across the Division are doing everything they can to reduce the incidence of cancer and support those impacted by cancer in our communities, including:

- providing crucial frontline support through multiple support groups, counselling sessions and answering 5,796 calls to our 0800 CANCER (226 237) helpline.
- answering any call for help with the support of our dedicated volunteers, including driving over 200,000km to get clients to and from treatment.
- spreading cancer prevention messages and working with our allies to advocate for the health of our communities to local and central government.
- providing 3,361 bed nights supported accommodation to those needing treatment at Wellington Regional Hospital who come from out of town.
- fundraising over \$7.4M across the Division through events, grants, bequests and appeals to make sure we can keep providing support to the growing population that need us and our services.



Scooter Safari participants en route to the Remutaka Ranges



Welcoming pōwhiri for new CEO, Darryl Carpenter

We opened two new offices in the Division in Porirua and Motueka – Te Puna Aroha (Cancer Society Porirua Hub) and Kōwhairangi (Cancer Society Motueka). Our new offices aim to provide fair, equitable and accessible support and services to people and whānau affected by cancer in the hāpori (community) and will make a big difference in reducing health inequities in our most needed communities. We can work even closer with other providers and our partners in the community as well.

We held incredibly successful Relay For Life events in both Nelson Tasman and Greater Wellington. Our Nelson Tasman event aimed to raise \$100k and ended up raising over \$200k. Our Greater Wellington event raised over \$755k, the highest we've ever achieved, making this Relay event one of the biggest in Australasia.

We also held our inaugural Capital 2 Country Scooter Safari, where 60 brave riders rode their 50cc scooters from Wellington City, over

the Remutaka Ranges and into Masterton, raising money for our work.

We welcomed many new staff and said haere rā (farewell) to those who have moved onto new adventures. We want to acknowledge and thank Moana Uerata-Jennings, who led the Division valiantly for 11 months in her role as Interim Pou Ārahi. Moana continues to provide her expertise across the Division as Manager Volunteering and Margaret Stewart House (our client accommodation).

We want to emphasise that the incredible accomplishments in the 2023/24 financial year were due to the collective effort of our staff, the Board, volunteers, supporters, communities, funders, delivery partners and key stakeholders. Together, we're making a positive difference and doing everything we can to reduce the incidence and impact of cancer in Greater Wellington (Wellington, Porirua and Kāpiti), Wairarapa, Nelson Tasman and Marlborough.

Thank you to everyone.

Ngā mihi nui,



Leanne Brockelbank

*Tiamana
Board Chairperson*



Darryl Carpenter

*Pou Ārahi
Chief Executive Officer*

2023/24 Wellington Division Highlights



1,600

new client referrals



5,796

calls to the Cancer Information
Helpline nationwide



242,383

kilometres driven to
transport clients



1,716

counselling sessions for
clients and whānau/family



\$295,750

in grants to fund cancer
research projects



2,142

workshop/programme
attendees



3,361

nights stayed at Cancer
Society accommodation
facilities



14

live-saving regulation
submissions made



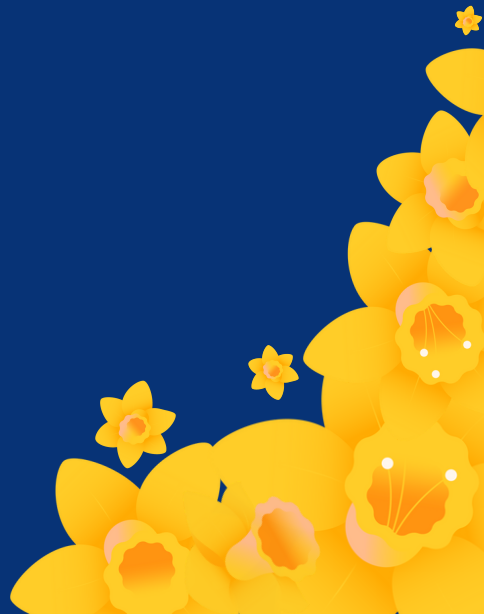
1,494

volunteers



20,254

hours gifted by
volunteers



Supportive Care

Model of Care

Our national Model of Care continues to guide the work the Supportive Care team have been doing across the Division. The Model helps us reach the people who need our services the most in a way that is most beneficial to them.

The Model of Care requires all aspects of our business to work together. Our Cancer Prevention, Fundraising, Volunteering and Supportive Care managers have been putting together plans to target different initiatives in the Model of Care to ensure our services meet the needs of our communities.

We have been working on the reach and diversity of our local support teams across the Division and pinpointing where the highest need is. As a result, we opened two new offices in Motueka and Porirua and we are working towards a new office in Hutt Valley.

In these new offices, we've added two new Supportive Care roles and three new roles working specifically with Māori healthcare providers and local iwi to support whānau, working across both Cancer Prevention and Supportive Care. We are hoping to implement similar models in the Wairarapa and Hutt Valley too.

To provide the level of support needed in our communities, we have increased our Supportive Care volunteers. Notably, volunteers have been assisting with our CanSupport programme, a home visiting service that provides a helping hand for clients living alone or time out for caregivers.



Across the Federation

Across the national federation, we have been trialing parts of the Model. By working together and piloting different parts in different places, we are closer to implementing the National Model of Care.

- We've been working towards a single 0800 helpline. We are hopeful that by next year, we will have Virtual Connect, our outbound calling service, up and running in Wellington.
- Canterbury and West Coast have built a new online help portal and are currently in the process of testing and refining it.
- Auckland and Northland have moved to a new client database which will allow us to support clients across the country as they move between Divisions.

Margaret Stewart House

Margaret Stewart House continues to be a crucial support service of the Division for people needing treatment at Wellington Regional Hospital from out of town. This last year, we had 3,361 nights stayed, a 20% increase from the year prior.

We welcomed Amanda Smith to our incredible team of House Supervisors. Amanda has already made a huge difference at the house and is always willing to lend a hand and smiling face.

As always, we want to thank our volunteers who assist our House Supervisors during the week. The house wouldn't be as well functioning as it is without them. We also want to give a special thanks Good Bitches Baking for their continuous support throughout the last year. Our guests always appreciate the delicious baked goods that the team provides.

We're looking forward to making some much needed renovations to the house in the future, ensuring that our clients and their whānau can continue to have a safe, warm place to call their home away from home while receiving treatment.

Christmas wishes at Margaret Stewart House



Scattering Relay For Life candle bag ashes for World Cancer Day



“ Margaret Stewart House, a **safe** place to be, the Cancer Society, looking out for thee, accommodating loved ones, supporting us through strife.

You can even bring... Your husband, or your wife, sister, brother, whānau, all feel welcome here. Surrounded with aroha and **lots** and **lots** of cheer.

Dilmah kindly offer, the finest of their teas, a cuppa bringing comfort, to the likes of you and me.

Staff attending at the desk, greet you with a smile, the facilities are **great**, providing for our needs, and the Baking Bitches Tuesdays with their yummy feeds.

Thank you from our family for **ALL** that you do, supporting people with cancer, and helping them get through.

Poem written by a thankful past guest at Margaret Stewart House”

Cancer Prevention

At the Cancer Society Wellington Division, the Cancer Prevention and Volunteering Teams have been piloting a volunteer advocate programme. Whilst advocate volunteers are well established in our overseas counterparts (Cancer Council Australia, Cancer Society US, Cancer Society Ireland) this is the first of its kind in Aotearoa and we have benefited from kindly being gifted the model from Cancer Society US.

Piloting the volunteer advocates programme provided the Division an opportunity to recruit a younger and more diverse group of volunteers than we have had for other volunteer programmes; we call them the Cancer Prevention Advocates.

Recruitment was incredibly successful and between September and March we were able to recruit 12 passionate rangatahi from Colleges and Universities across the Division who are motivated about cancer prevention, health and wellbeing, and creating healthier futures for Aotearoa - because the best kind of cancer is the cancer you never had!

Starting in November the advocates received a range of training including in-house training on our key prevention messages, advocacy positions, and policy asks; Summer School sessions on 'Cancer Prevention and Care: Environmental and Policy Solutions' from our Cancer Collaboration partners at Otago University; and training from the Cancer Prevention team to enable them to support advocacy opportunities and activities.



Youth advocates



Cancer Prevention staff and advocate at a community event



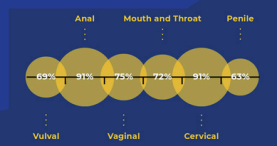
Youth advocate promoting messages on the radio

Supported by the Cancer Prevention Team and building on what they learnt our advocates designed two sets of engagement messages and resources (HPV Don't Miss Your Shot and the 10 Ways You/Decision Makers Can Prevent Cancer spinner wheel).

As well as these awareness raising tools, the advocates have participated in street surveys, submission writing and delivering oral submissions to councils.

DON'T MISS YOUR SHOT

The HPV vaccine protects tamariki and rangatahi from six types of cancer!



It's safe, effective, long-lasting and FREE up until your 27th birthday.

cancer.org.nz/hpv-awareness



What's next?

What's next for these advocates is training them in the broader skills of advocacy - designing a campaign, speaking to the media, drafting media releases, finding mentors and building a movement.

This training has been developed in partnership with Te Whatu Ora and experts with a long history of advocacy for health and is being developed to be delivered in schools across the Division.

Ngā mihi nui

It has been such an exciting ride, and we are enthusiastic about where the advocates will go and where they will take us. Graduates of this programme have gone on to full time work and are jetting off to international universities to pursue PhDs in cancer research.

We have appreciated the opportunity to manaaki, awhi and empower our advocates, and can't wait for the boundless possibilities this program will bring to the future of cancer prevention.



Advocates at Pinkilicious (community health event)



Cancer Prevention staff and advocates

Greater Wellington

Te Whanganui-a-Tara

Wellington Centre

It's been another busy year for the Wellington Centre. We welcomed many new staff across each team, all excited to do their part to support those affected by cancer in our community.

Supportive Care

We saw an increase to the number of people accessing our services, keeping the weeks busy for our nurses, counsellors and coordinators. The team hosted many workshops and support groups, including the popular CanMove, CanBead and Meditation sessions with Kadampa Meditation Centre's Kelsang Pagma.

Volunteering

Our dedicated volunteering team and incredible 500+ volunteers stood up to help us run Daffodil Day, Walking Stars, Relay For Life and more, all while doing their regular volunteer driving, home visiting and sewing.

Cancer Prevention

The team have been out and about in the community, doing their part to spread our cancer prevention messages and advocating on behalf of the community to local and central government. Notably, the team have been leaning into new ways to reach our young people by advertising in local magazines and online.

Fundraising

We've been busy bringing in funds and exploring new fundraising options through events, grants, bequests and appeals to make sure we can keep providing support to the growing population that need us.



CEO Darryl Carpenter and Black Caps batter Finn Allen



Daffodil Day fresh flower bunching



Cancer Society stand at Newtown Festival

Porirua Hub

We opened the newest hub of the Cancer Society Wellington Division on 29 February 2024. Local iwi, Ngāti Toa, formally blessed the office and generously gifted us with the name Te Puna Aroha.

A lot of time and hard work went into opening Te Puna Aroha, but it is hugely gratifying being able to support people with cancer and their whānau within the community, as well as creating networks and collaborating with other organisations. We aim to provide a client and whānau centred holistic service which aims to reduce health inequities experienced by many in our hapori. We have two full-time kaimahi (staff) and a counsellor who sees clients one day each week.

Several groups and programmes are run out of Te Puna Aroha such as a regular monthly coffee morning, providing much needed peer support for people. We also run workshops around stress management and mindfulness, as well as ones in the creative space which allows for new learning as well as connecting with others.

Our rooms are central, accessible, and comfortable. Many people choose to come and see us at the Hub, however we also offer home visiting. Being based in the community means we are responsive, agile, and connected. Our mahi continues with further promotion of our services to medical and allied health units as well as social services so we can increase the awareness of our service.



Kāpiti Support Centre

Our Kāpiti Support Centre continues to be a high demand branch of the Division with an 18% increase in clients and whānau reaching out for local support.

Earlier this year, we had an editorial published in the Kāpiti News. The story was picked up by The Platform, a new nationwide radio station. Mandy Savage, our Centre Coordinator and Senior Health Promoter, got to chat to host Leah Panapa about local services including:

- Monthly peer support morning teas where people can connect with others, discuss common issues, and have support and information provided.
- A home visiting service where someone from a team of friendly, professional and police-checked volunteers can provide companionship and practical support.
- Free parking permits, and 50 volunteer drivers who can take people from their home to hospital appointments out of town and safely back home again.
- Cancer information from our qualified nurse and Support and Information Coordinator, Hilary Adams.
- An experienced counsellor to help clients and whānau process their changing lives by appointment, with no waitlist.
- Various workshops and events throughout the year, a small library of books and brochures, a therapeutic garden, and subsidised massage in Wellington, Kenepuru and Hutt Valley.



Youth volunteers



CanBead workshop participants

“Our people are always going to have to travel for treatment but we’re trying to do things at the Cancer Society to **make their lives easier by providing that support and information.”**

- Mandy Savage, Centre Coordinator

Wellington Centre



52 Riddiford Street,
Newtown



04 389 8421



info@cancersoc.org.nz

Porirua Hub



6 Hagley Street,
Porirua City Centre



04 495 4652



poriruahub@cancersoc.org.nz

Kāpiti Support Centre



27 Kāpiti Road,
Paraparaumu



04 298 8514



info@cancersoc.org.nz

Volunteering



Daffodil Day volunteers



Staff and Relay For Life volunteers

We have had a very busy but fruitful year with volunteers supporting our work across all parts of the Cancer Society Wellington Division. With over 500 volunteers in the Wellington Centre alone and over 1,400 across the Division, we could not support as many clients as we do without the generosity of time from our volunteers.

The success of our events throughout the year is undeniably due to the passion and support of volunteers. We are so fortunate to have so many dedicated volunteers with a vast array of skills to share and a willingness to learn some new ones along the way.

We piloted a new role this year with our Cancer Prevention Advocates. This is a completely new role that supports the advocacy of our Cancer Prevention key messages at events, expos, local government and Parliament. These volunteers have had the opportunity to present on a topic they are passionate about, write submissions and work with community at local events. Taking our lead from organisations such as the Irish Cancer Society, American Cancer Society and Cancer Research UK, we have adapted their programmes to meet the political environment we have here in Aotearoa NZ.

Events

Capital 2 Country Scooter Safari

After the success of the Tranz Alpine Scooter Safari down south, we held our inaugural Capital 2 Country Scooter Safari last July.

60 riders travelled from Wellington City, over the Remutaka Ranges to Wairarapa - raising an amazing \$50,000.



Staff and volunteers



Scooter Safari participant

Relay For Life

Relay For Life hosted at Trentham Racecourse in March was a highlight for our staff, supporters and community. The candle-light ceremony itself stands monumental in the minds of all attendees.

Combined, the main event and supporter-led 'Relay Your Way' events raised over \$755,000 - our largest amount to date!



Cancer Society's Amber Arkell with Iwi Riders participant



Staff with Matua Don Rangi and Dame Winnie Laban



Cancer Society Greater Wellington



@cancersocietygw



Cancer Society, Wellington Division



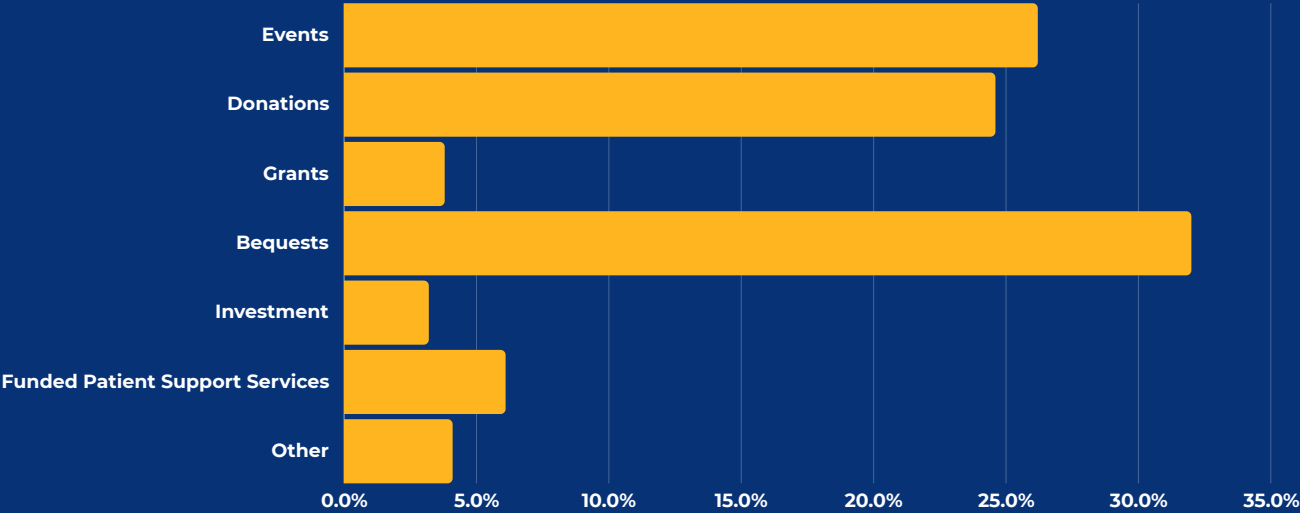
cancer.org.nz/wellington

Covering Wellington,
Porirua, Kāpiti and
Margaret Stewart House

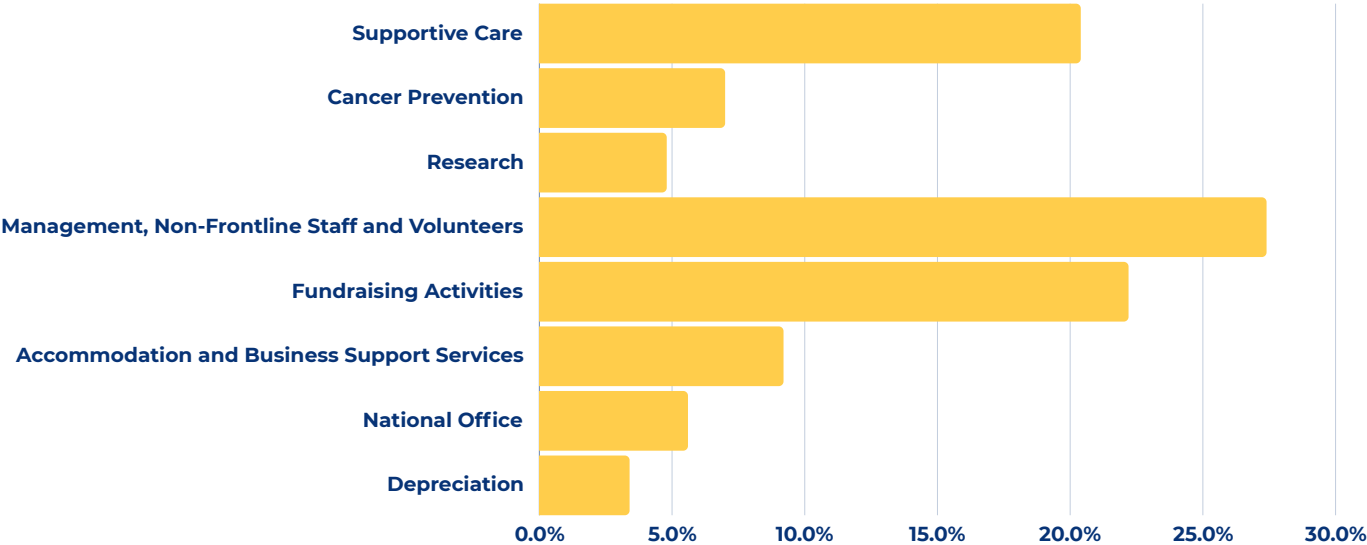
Financial Summary

Cancer Society Greater Wellington raised \$6.84 million for the 12 months to 31 March 2024. Expenditure for the same period was \$5.8 million. Cancer Society Greater Wellington is a registered charity under New Zealand's Charities Services (DIA). Full financial statements (including audit reports) are available on request.

Income Sources



Income Spent



Wairarapa

Fundraising

In August 2023, Daffodil Day received outstanding support from the community, featuring numerous small fundraisers and a well-supported street appeal. In November, four locals took on the Longest Golf Day challenge, raising \$5,000 on one of Wairarapa's hottest summer days.

For the first time, we diversified from the traditional daffodil fundraiser and sold sunflowers, which were well received by the community. Additionally, we introduced a Daffodil Bulbs fundraiser, further diversifying our fundraising activities.

Supportive Care

Client support is our core mission. We saw a rise in client registrations to 191, up from 162 last year. We remain dedicated to providing personalised care and support, adapting to the unique needs of our clients.

This year, we enhanced our support groups, focusing on cancer-related topics and providing a platform for attendees to share their experiences and support one another.

Cancer Prevention

Our shade loan trailer programme saw increased demand, supporting over 50 community events and shielding attendees from UV exposure.

We actively promoted smoke-free and vape-free environments, reigniting the Fresh Air Project across our region. Our prevention efforts are focused on education and advocating for healthier lifestyle choices to mitigate cancer risks.



Volunteering

This year, volunteer hours increased significantly across all areas of our operations. Our drivers travelled 59,172 kilometres, marking a notable 40% increase from the previous financial year. These volunteers play a crucial role in ensuring our clients can attend cancer-related appointments, offering essential support and comfort.

We also hosted annual volunteer training sessions and appreciation events to enrich their experience and recognise their invaluable contributions.



Sunflower volunteer



Longest Golf Day participants



Sunflower volunteer



CS Wairarapa's Danel Herd and Sue at the UCOL Term 1 Orientation

Commitment to the Community

The Wairarapa Cancer Society remains deeply committed to serving those affected by cancer in our region with heart and authenticity.

Our initiatives in fundraising, supportive care, volunteering, and cancer prevention are driven by a shared goal: to enhance the lives of those we serve. We appreciate the steadfast support from our community and are eager to build upon this year's achievements to make an even greater impact.

Looking ahead, we aim to expand our outreach programmes and forge partnerships with other health organisations to further enhance our services and support more individuals across the Wairarapa region.

Contact us

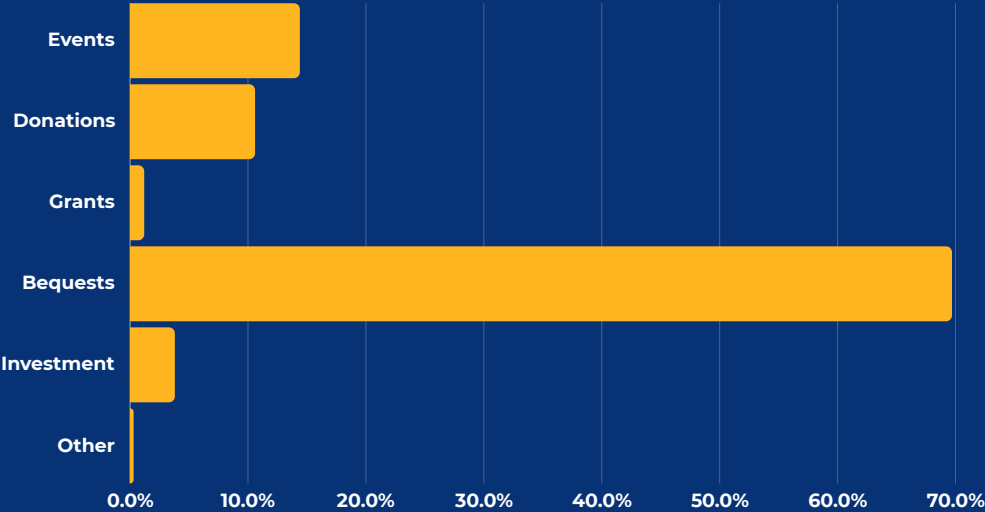
37 Te Ore Ore Road, Masterton
06 378 8039
waisupport@cancersoc.org.nz

Wairarapa Cancer Society Inc
@wairapacancersociety
www.cancer.org.nz
Wairarapa Cancer Society

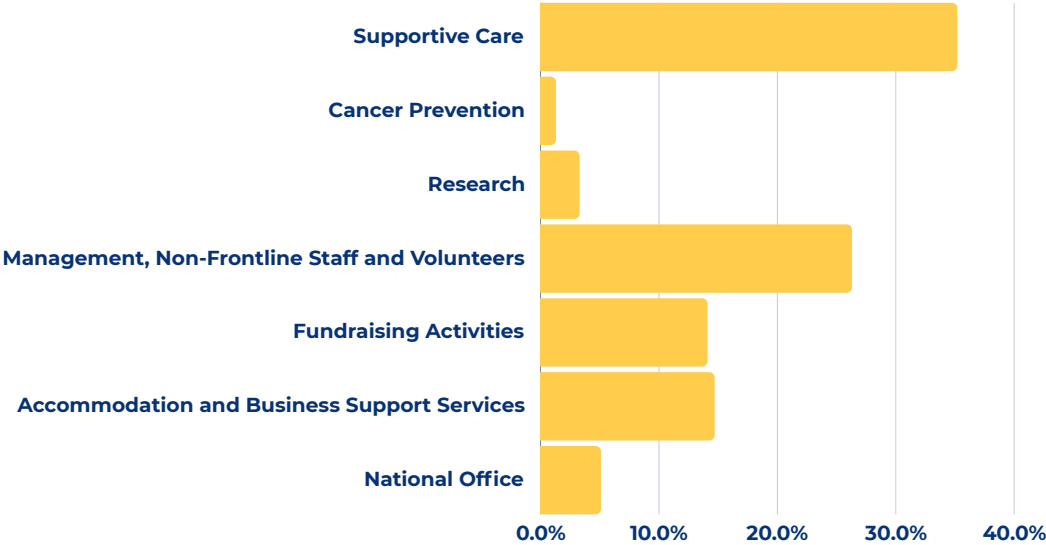
Financial Summary

Wairarapa Cancer Society raised \$0.6 million* for the 12 months to 31 March 2024. Expenditure for the same period was \$0.4 million*.

Income Sources



Income Spent



* Figures submitted have not been audited. For more information, please contact Wairarapa Cancer Society.

Whakatū

Nelson Tasman

Support for people with cancer and their whānau

Cancer Society Nelson Tasman proudly reflects on a year of outstanding support and dedication to their community, assisting 520 individuals and whānau across the region. There were 320 new clients and whānau referred for support, along with an additional 70 reconnecting, including those sadly facing a recurrence. They facilitated 1,259 attendances at support groups throughout the area. Of the 257 support grants approved in 2023/2024, 38% were related to income loss, 28% to rural/regional travel costs, and 25% to cancer-related health and treatment costs. They funded 270 counselling sessions, with 34% of these for whānau members, including children.

A highlight for 2023/2024 was the opening of their new Kōwhairangi Motueka office, with the addition of two new team members: Support Coordinator Maureen Urwin and Kaiārahi Hōtaka Tāwhaki Simons. Maureen covers Motueka, Golden Bay, and rural areas, while Tāwhaki provides outreach support to the region's Māori community and runs the Kia Ora e te Iwi programme for whānau facing cancer.

The decision by the Cancer Society Nelson Tasman Board was in response to growing needs in rural regions and the necessity to improve outreach to Māori in the Nelson Tasman community who are more impacted by cancer. It demonstrates their commitment to equity and accessibility in a practical way.



Longest Golf Day participants



Nelson and Motueka staff



Jump For Cancer participants

Since the Motueka office opened, there has been a consistent increase in both rural and Māori referrals, with an additional 40 new clients and whānau referred compared to the 2022/2023 year. Local health professionals have provided very positive feedback about having a local base, and people are regularly calling in. With Maureen and Tāwhaki joining the team, visits to Golden Bay/Mohua are more frequent, and new support initiatives provided by the team are underway in Motueka and Takaka.

Relay For Life

A standout event of the year was Relay For Life Nelson Tasman, held in mid-March 2024 and proudly sponsored by GJ Gardner Homes Nelson. Having not had an in-person Relay event since 2018, it was a significant undertaking and milestone, far surpassing expectations. This monumental gathering saw 545 participants and 49 teams come together, showcasing the power of community solidarity. The enthusiasm of the fabulous Relay For Lifers was contagious, and their collective efforts raised over \$202,000, surpassing the initial goal of \$100,000. The local community support was truly amazing, helping to achieve their fundraising goals.



Relay For Life participants and staff



Relay For Life participants



Hands of Hope



Chop the Mop participants



Opening ceremony



Staff with representatives from Bowater Toyota

Nelson Centre

102 Hardy Street,
Nelson

03 539 1137

info@cancernelson.org.nz

Motueka Centre

218B High Street,
Motueka

03 528 7669

info@cancernelson.org.nz



Cancer Society Nelson Tasman



Cancer Society Nelson Tasman



@cancersocietynelsontasman

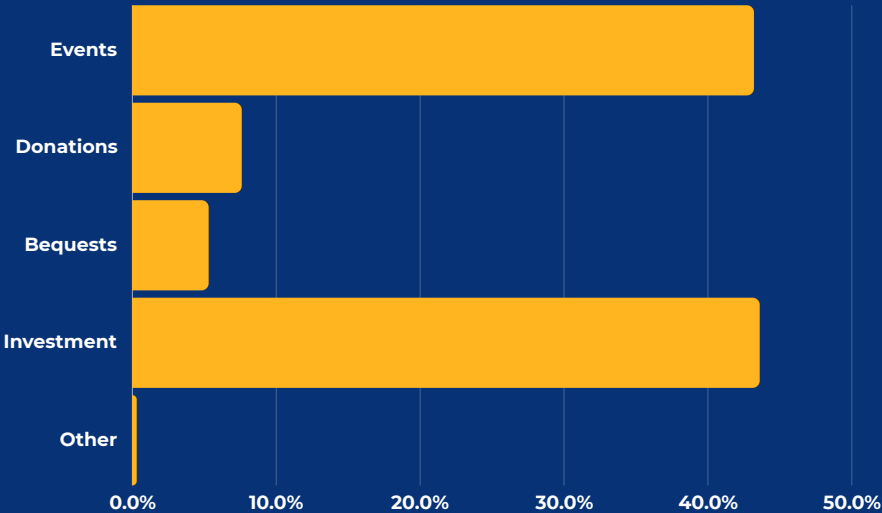


cancernelson.org.nz

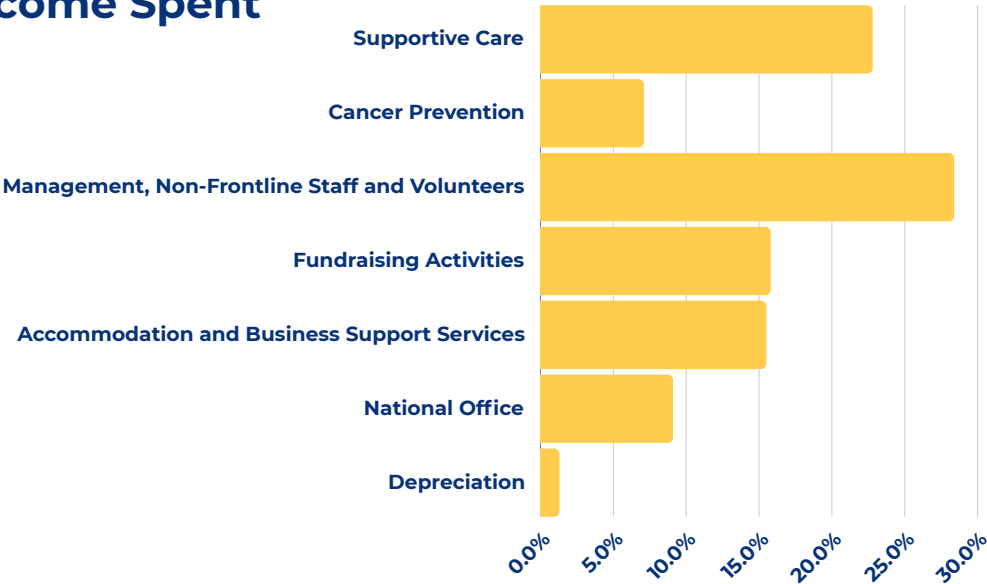
Financial Summary

Cancer Society Nelson Tasman raised \$1.33 million for the 12 months to 31 March 2024. Expenditure for the same period was \$0.93 million. Full financial statements (including audit reports) are available on request.

Income Sources



Income Spent



Waiharakeke

Marlborough

Centre Team Changes

This year, our centre has seen significant changes with new team members bringing fresh energy and perspectives. We bid farewell to Centre Manager Fliss, whose massive contributions to the centre have been invaluable. Her dedication and hard work have left a lasting impact.

We were pleased to appoint Kaye MacDonald as Kaiārahi Hōtaka/Programme Lead and Dallace Lilley as Support and Information Coordinator, both starting in August 2023. Their roles are crucial in enhancing our services and support for the Marlborough community.

Supportive Care

Our commitment to supportive care has seen the introduction of new support groups over the past 12 months. We registered 131 new clients, marking a 33% increase from the previous year's 99 clients. Of these new clients, 66% were female and 34% male, averaging 11 new clients per month. Our referral sources were 49% self-referrals, 27% from health providers, 14% from oncology, and 10% from family and friends. The age distribution showed that 40% of our clients were of working age, 52% were 65 years or older, and 8% were unknown.

Cancer Prevention

Our cancer prevention efforts have been proactive and community focused.

Kia ora - e te Iwi, our kaupapa Māori cancer support programme, took place in September and March. This event aims to increase knowledge of cancer and local health & support services, as well as provide a safe forum to share concerns and learn from each other. Practical sessions were included to build coping skills and resilience, featuring complementary therapies like Rongoā.

Volunteering

We had 86 drives in the 2023/24 financial year, resulting in 2,150 kilometres driven. We have 89 registered volunteers who contributed a total of 1,951 volunteer hours. We are immensely grateful to all our volunteers for their amazing support.

Commitment to the Community

Cancer Society Marlborough remains strong in its mission to support and uplift those affected by cancer in our region. Expansion of our team, new support initiatives, and cancer prevention activities all reflect our ongoing dedication to serving the community with compassion and commitment.


We are grateful for the community's continued support and look forward to building on this year's achievements. Our focus for the coming year is to expand our outreach programmes, strengthen partnerships, and enhance our services to make a more significant impact on the lives of individuals across the Marlborough region.



Contact us

 76a Maxwell Road,
Blenheim
 03 579 4379
 marlborough@cancersoc.org.nz

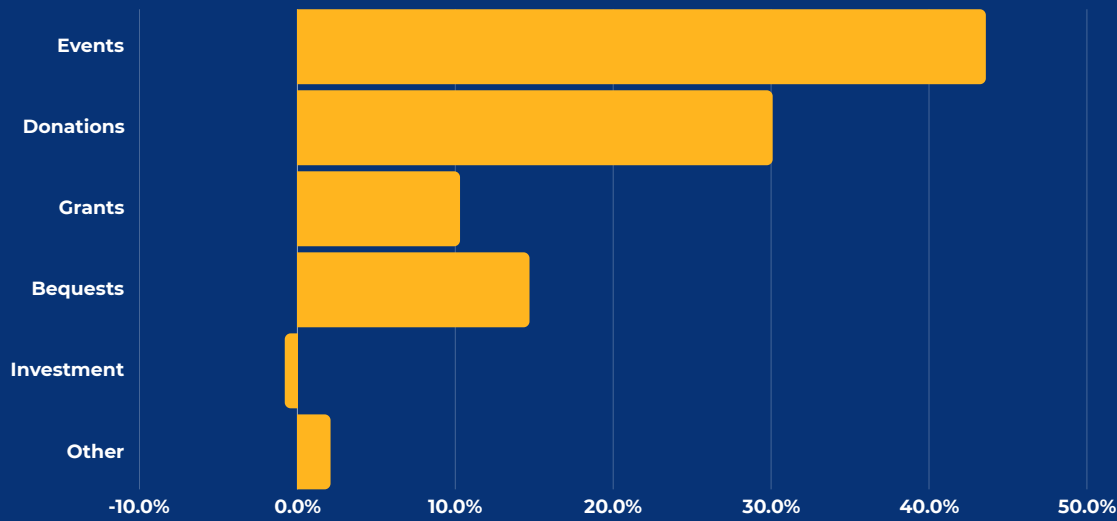
Follow us

 Cancer Society Marlborough
 @cancersocietymarl
 cancer.org.nz/marlborough

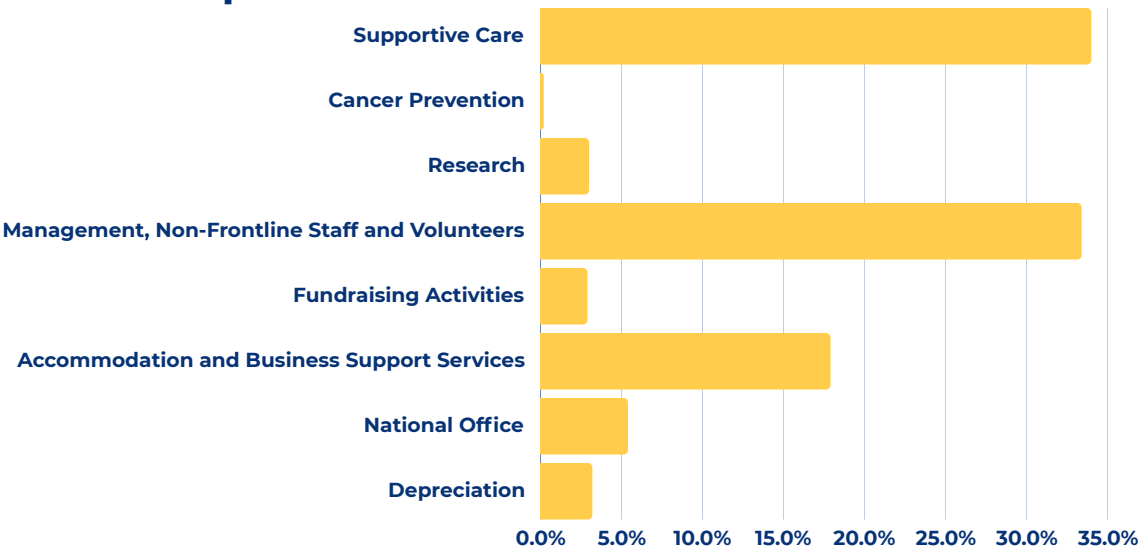
Financial Summary

Cancer Society Marlborough raised \$0.16 million* for the 12 months to 31 March 2024. Expenditure for the same period was \$0.42 million*.

Income Sources



Income Spent

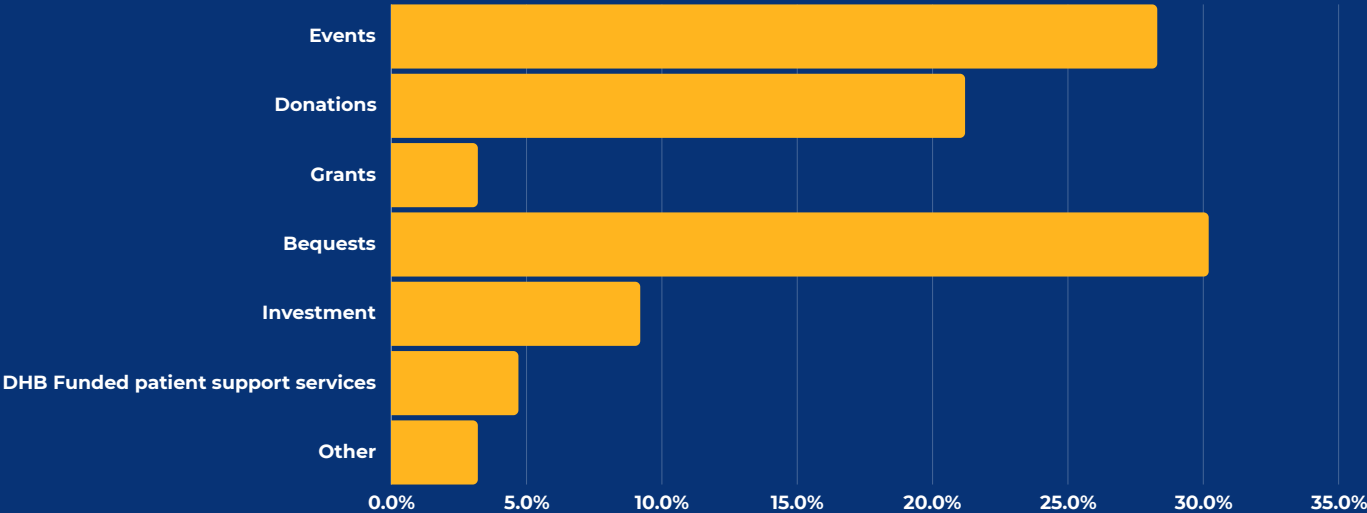


* Figures written have not been audited. For more information, please contact Cancer Society Marlborough.

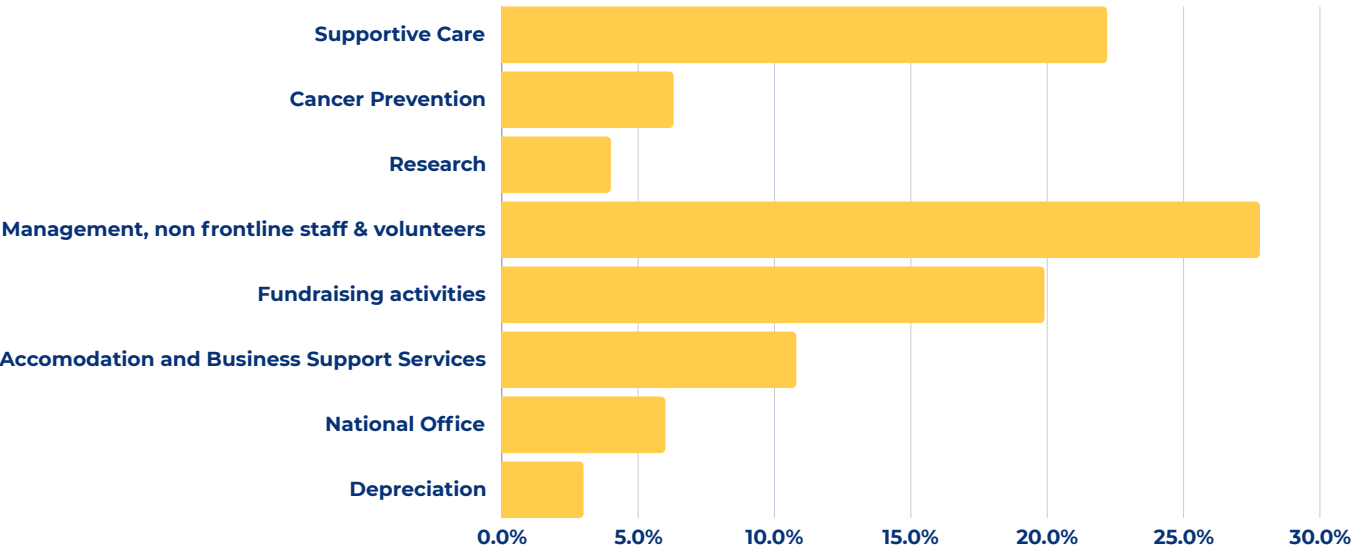
Financial Summary - Wellington Division Consolidated Figures

Greater Wellington, Wairarapa, Nelson Tasman and Marlborough

Income Sources (%)



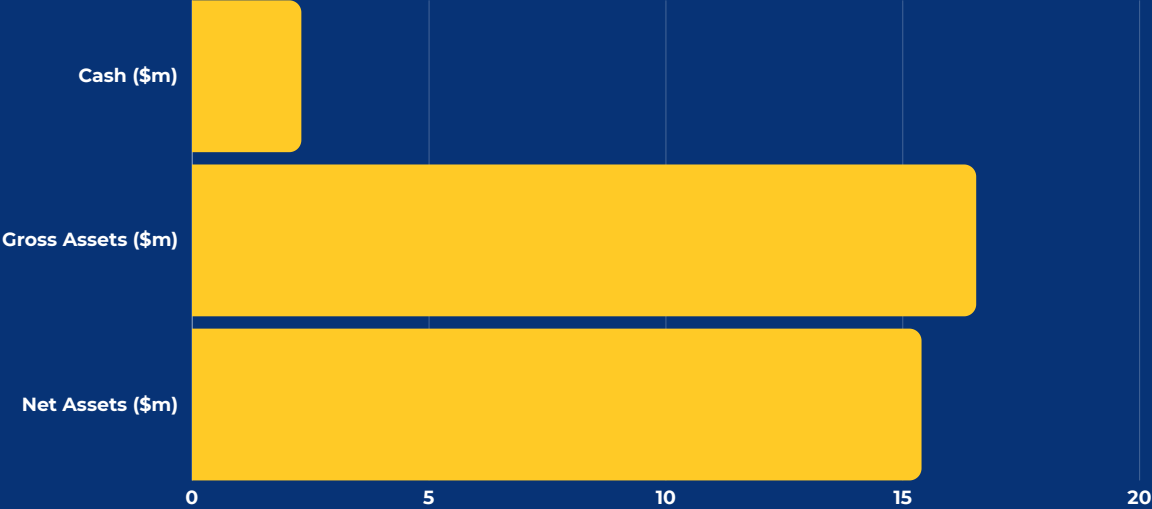
Income Spent (%)



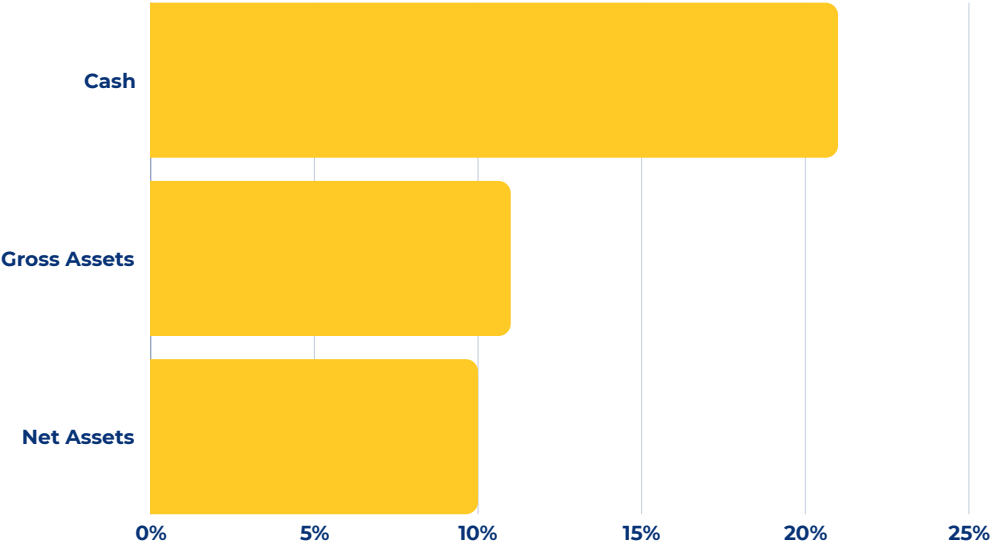
* Figures written have not been audited. For more information, please contact Cancer Society Greater Wellington.

Financial Position - Wellington Division Consolidated Figures

Greater Wellington, Wairarapa, Nelson Tasman and Marlborough



% Change - FY 22/23 vs FY 23/24



* Figures written have not been audited. For more information, please contact Cancer Society Greater Wellington.

Supporters

We owe a big thanks to our remarkable and dedicated supporters who have continued to generously donate.

Thanks to our wonderful supporters, we're able to look to ease the impact of cancer by:

- Offering new support facilities in high-need communities like Porirua and Motueka.
- Actively promoting programmes to reduce the incidence of cancer – tobacco control, skin cancer prevention, nutrition and physical health, addressing inequities for Māori and Pasifika whānau and early detection screening and vaccination.
- Recruiting additional Supportive Care coordinators and counsellors.
- Providing research grants to help reduce the incidence of cancer for our tamariki and mokopuna (children and grandchildren).
- Helping to provide bed nights at Margaret Stewart House for people receiving treatment at Wellington Regional Hospital, but live far away.
- Coordinating the volunteer driving service so patients can get to and from their treatment.
- Investing in raising the next fundraising dollar.



Ngā mihi nui

33 Trust Ltd
A & D Kerr
Adrian Fletcher
Ailsa Cowan
Avoca Web Design
B & L Hawkes
Beachside Catering
Bellyfull
Bill Irwin
Bowater Toyota
Brian Tucker
CanBead
Chartered Accountants Australia &
New Zealand
Creative Communities NZ
D & I Wither Trust
D & S Ussher
David Lacey
Designart Signs Ltd
Diane (Christmas appeal)
dpa Chartered Accountants
Eastern & Central Community Trust
Elaine Wong
Estate of R J Watt
Falcon Brae
Fico Finance
Four Winds Foundation
G.J. Gardner Homes
Genia
Gibbons
Good Bitches Baking
Graeme Dingle Foundation
Graeme Eskrigge Trust
Gwen Aimee Innes
Hamish Fletcher Lawyers

Happy Hire
Hato Hone St John
Healthy Steps
Helen Clarke
Hopgoods
Hutt International Boys' School
Hutt Mana Charitable Trust
Jarden
Jens Hansen
Jess (Daffodil Day appeal)
John Gilberthorpe
John Roadly
Judy Gunn
Kāpiti Coast District Council
Katherine Jourdain
Kelsang Pagma
Kia Kaha Hockey Club
Kokiri Marae
L & J Le Cren
L Mills
Lindsay Linney
Lion Foundation
Longford Trust
Lottery Grants Board (Wellington/
Wairarapa Committee)
Macalstair Mazengarb
Maico Camilo
MailPrimer
Mandy Gargiulo
Marlborough Lines Limited
Martine Matapo-Koisko
Master Valet
Michael Dingley
Nelson City Council
Nelson Vintage Car Club

Thank you to our supporters

New Zealand Community Trust
(NZCT)
Nikau Foundation
Norwest
One Foundation
Ora Toa
Owen and John Whitfield Charitable
Trust
Paddy Brow Trust
Paraparaumu Community Board
Pātaka
Pelorus Trust
Pinkerton Estate
Pinkerton Estate
Porirua City Council
Property Brokers Wairarapa
Rapid Relief
Ratra Foundation
Raumati Community Board
Ray Watts Charitable Trust
Richmond Loins Club
Rural Women Brightwater
Salvation Army Porirua
Select Signs Wairarapa
Society of Mary New Zealand
Stella Van Gelder
Storage Nelson
Supergrans
SupportCrew
Sydney and Angela Cummings
Charitable Trust
T J Obrien

Te Piki Oranga
Te Rūnanga o Toa Rangatira
The Concrete Company
The Cooper Group
The Old Knox Church
The Rees Queenstown
The Vintage Aviators
The Wong Family
Thomas George Macarthy Trust
Tom Marston
Trust House Foundation
Upper Hutt City Council
Vaka Atafaga
Waikanae Community Board
Waioara Collective
Walter and Rana Norwood Charitable
Trust
Wellington City Council
Wish You Were Here
Zains (May appeal)

We're in **your community**

Wellington Centre

52 Riddiford Street, Newtown
04 389 8421
info@cancersoc.org.nz

Porirua Hub

6 Hagley Street, Porirua
04 495 4652
poriruahub@cancersoc.org.nz

Kāpiti Support Centre

27 Kāpiti Road, Paraparaumu
04 298 8514
info@cancersoc.org.nz

Nelson Centre

102 Hardy Street, Nelson
03 539 1137
info@cancernelson.org.nz

Motueka Centre

218B High Street, Motueka
03 528 7669
info@cancernelson.org.nz

Marlborough Centre

76a Maxwell Road, Blenheim
03 579 4379
marlborough@cancersoc.org.nz

Wairarapa Centre

37 Te Ore Ore Road, Masterton
06 378 8039
waisupport@cancersoc.org.nz



Every person, **every cancer.**

www.cancer.org.nz

0800 CANCER (226 237)





**Cancer
Society**

Te Kāhui Matepukupuku
o Aotearoa