



Southern  
Cancer Society

Te Kāhui Matepukupuku o Te Waipounamu

# Canterbury- West Coast Division

Annual Report  
**2024**





**Kate Reid**  
Chairperson

# Chairperson's Report

We have made valuable progress in our quest to limit the impact of cancer in our communities this financial year. We celebrated the opening of our new Canterbury Cancer Centre, and the work to merge with Otago and Southland Division, is well underway.

These initiatives mark the beginning of a new chapter for cancer care in the South Island. However, workforce issues within our health services are still providing challenges to diagnosing, treating and supporting people with cancer.



*The Southern Cancer Society's Canterbury Cancer Centre in Christchurch*

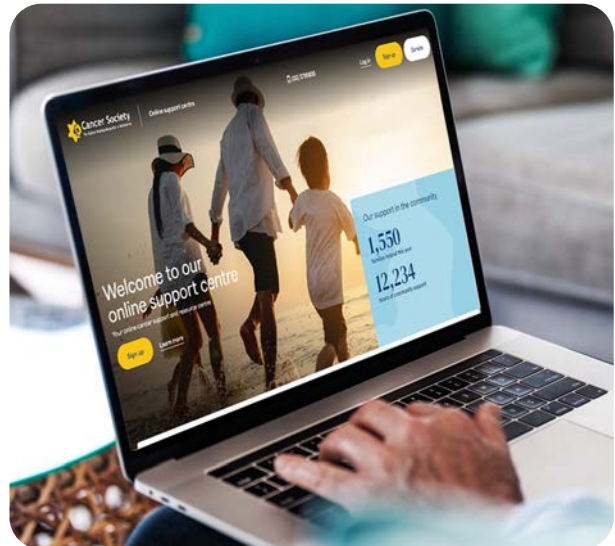
We acknowledge that both the sector and the government are working diligently to address these issues.

The Cancer Society aims to reduce the incidence of cancer, advocate for early detection, and support families through their cancer journey. Our fifty-room accommodation centre provides safe, purpose-built accommodation, ensuring all essential services are available under one roof. We offer a range of new services, including counselling, physiotherapy, nutrition, and peer support. Additionally, our shuttle service transports guests to external appointments, making their passage smoother and more manageable.

From its opening in September 2023 until 31 March 2024, 578 people had stayed in the facility. Although the majority were from the Southern Cancer regions, we had one-hundred-and-fifty-six guests from Nelson Marlborough and even one from Wellington. Feedback from guests is that it removed a burden during a very stressful time.

The Otago Southland and Canterbury West Coast Divisions have always collaborated effectively, but our planned merger into one entity will strengthen us, so we can better ensure equal access to services and support across our regions. The merger also allows us to streamline our operations and extend our reach so we can help even more families through their journey.

I want to thank our board members for their invaluable support and strategic vision for our division. I would also like to acknowledge Nicola Coom our CEO for her passion and energy in supporting our incredible staff to ensure we are striving for better cancer outcomes every day.



*The Southern Cancer Society's new online support portal*

I also want to thank our staff and volunteers. We would be lost without you as would the thousands of people you support each year. I'm not sure you understand just how valuable the work you do for the Cancer Society is, for so many.

Of course, our members and donors are invaluable. With one-in-three of us diagnosed with cancer, rates increasing, and no direct Government funding, we simply wouldn't be able to do the work we do without you.

A huge thank you to you all and a special thank you to ANZ – the principal sponsor of Daffodil Day and a major sponsor of the Cancer Society of New Zealand for over thirty years. An amazing contribution to the wellbeing of all New Zealanders.

Well done to you all.

Kate Reid  
Chairperson





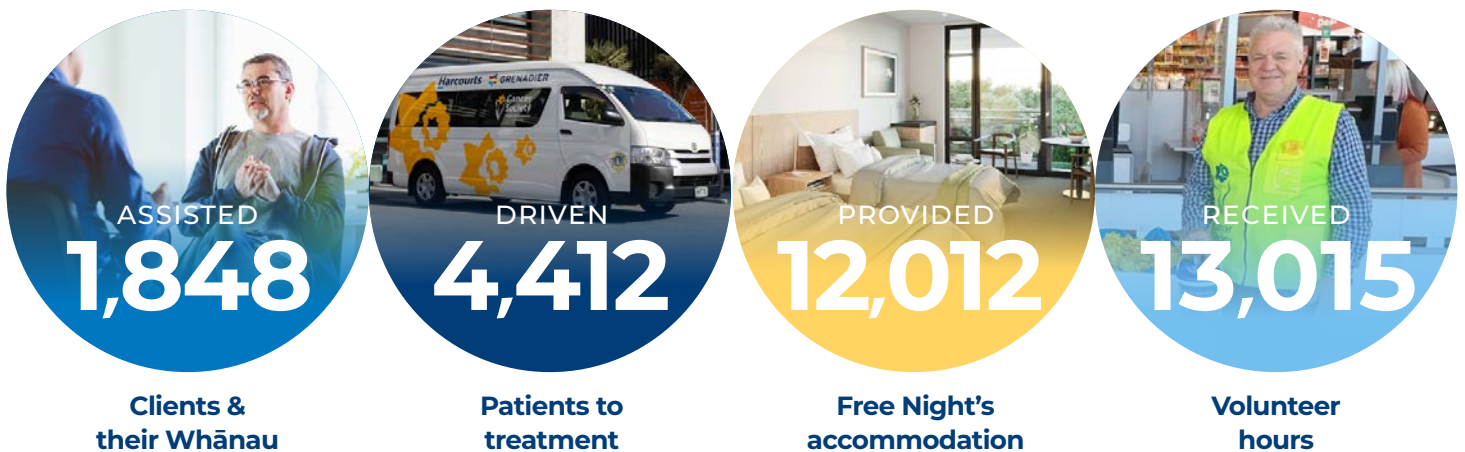
**Nicola Coom**  
Chief Executive

# Chief Executive's Report

Leading the Southern Cancer Society fills me with great pride. It's an honour to work with dedicated and enthusiastic people united in the fight against cancer. I extend my heartfelt thanks to our staff, volunteers, partners, and funders for their unwavering support.

While we all wish for a world without cancer, one in three of us is affected by it. This reality drives our efforts and has guided the development of our new 2024-2027 strategic plan.

In the last year the Southern Cancer Society has:



*The above table is the Summary Statement of Service Performance.*

We engaged extensively across community, donors, and clinicians to understand the need, challenges, ideas and expectations, and have also drawn on global insights.

This work has led to a laser-focused plan and a new concentrated effort on supporting young adults (under 50 years) due to the alarming rise in diagnoses, increasing our investment in cancer research in line with donor expectations, and prioritising early detection, particularly for cancers with high mortality rates. You can read more about our new plan further in this report.

A significant milestone this year was the merger of Otago Southland and Canterbury West-Coast divisions, ensuring seamless support for families across the South Island and reducing costs for shared services. The opening of The Canterbury Cancer Centre was another highlight, providing free accommodation for over 600 families in its first six months. Additionally, we launched Encompass Health from this new centre, a joint venture with St George's Cancer Care Institute, offering cancer rehabilitation services such as physiotherapy, nutrition, psychology and lymphoedema massage.

The cost-of-living crisis continues to impact our families, who are struggling within a strained health system. Our Cancer Navigators have reported families selling assets for private medical care and unfunded treatments. The support our Cancer Navigators provide is both emotional and practical ensuring no one goes through cancer alone. It includes education, coordination of medical appointments, facilitating access to support services such as budgeting, transport, accommodation, cultural support, providing a listening ear and much more. If there are any barriers to the cancer journey, our Cancer Navigators work hard to remove them.

We are about to launch our online portal, a one stop shop where families can access all the information, they need as well as choose and book appointments with our navigators and other support services. This tool allows families to take control of when, how and who they interact with. We are excited about what this can offer families and think it's a game changer for cancer support.

We will continue to lobby loudly and be unwavering for better access to treatment. for better access to treatment. Cancer is the leading cause of death in New Zealand and deserves to have these issues addressed. This is one of the reasons, Southern Cancer has committed to increasing its investment into research and innovation. As we receive no direct Government funding, our donors remain our only means of continuing with our work. Their dedication to the wellbeing of New Zealanders is commendable.

Lastly, I acknowledge our clinicians for their tireless work. Your commitment to our families is deeply appreciated and does not go unnoticed.

He waka eke noa, we are all in this together.

Kindest regards

Nicola Coom  
Chief Executive, Southern Cancer Society

# Our Strategic plan for 2024 - 2027



**One-in-three** of us will be affected by cancer in our lifetimes. The number of diagnoses is predicted to double over the next few years, while those affected are getting younger.

Workforce issues within our health services are providing challenges to diagnosing, treating and supporting people with cancer. Although survival rates are increasing, New Zealand's outcomes are not as good as Australia's or several other comparable countries.

While the Government and the sector work hard to improve these statistics, Southern Cancer scrutinised the work it does to support families through their cancer journeys and identify what its focus should be.

**We have identified five strategic priorities for 2024 – 2027 to achieve these ambitions.**

They are:



**1.**

Research and  
Innovation



**2.**

Early detection



**3.**

Extended reach



**4.**

Generate  
sustainable  
funding



**5.**

Partner for  
impact







# The 1 in 3 could be me

Southern Cancer intends to increase its investment into **Research and Innovation** to twenty percent of our total cost base because developing cures and treatments, helping people overcome or live well longer with cancer, is essential. We have formed a strategic partnership with Deloitte, which is using its best minds from across the world, to shape our research and innovation strategy.

We are holding an inaugural Research and Innovation Conference in **March 2025** to bring our leading cancer experts together and will know we are successful when our cancer outcomes are celebrated around the world in years to come.

One exciting aspect already in place is our involvement in the Tissue Bank Trust based at Christchurch Hospital. Here tissue samples are collected and stored for use in research programmes. Without tissue donations from those living with cancer, understanding and overcoming cancer would be so much harder. Our appreciation to those who donate their tissue samples is unwavering.

Which is why **Extending our Reach**, is so important to support all New Zealanders in their cancer journeys even before diagnosis. Ensuring information is readily available to all sectors of our communities is essential.

Providing people the information they need to detect cancer, steps they can take to prevent it, and, if they are diagnosed, the treatment and the support available, is a top priority. Of course, the support doesn't stop for survivors.

There are many things families can do to reduce the chance of cancer returning and ways to live well with any lingering side effects of treatments. A new digital platform we are currently piloting is a key piece of work to support this initiative.

Although Southern Cancer is well embedded in and part of our communities, we aim to **Partner for Impact** and unite the sector even further. We have created a new partnership framework and will put more emphasis on stakeholder engagement and relationships. We will also understand and communicate the impact Southern Cancer has on our communities.

Finally, without funding none of the above is possible. To secure our future, we need to **Generate Sustainable Funding**. The Cancer Society is the only charity that supports all cancers and all people with no discrimination. If we cease to exist, there is no Government or other organisation that does what we do. The Cancer Society is the only charity that supports all cancers.

**We rely on and are totally blown away by the on-going generosity of our donors, we can only do the work we do because of them. It's only through coming together that we'll drive innovation and achieve better cancer outcomes. So, if you haven't already, we ask you to join us for the fight.**



“Even after all this time living with cancer, I still don’t know if it’s a monster you fight, a wayward child you compassionately redirect, or a weed you poison along with everything else.”

So says cancer survivor, Christchurch woman Sheila Hailstone, who every day is grateful for those people who came before her, the researchers, the fundraisers and those who allowed themselves to be guinea pigs for new treatments.

She knows without these people, her cancer journey might have ended very differently. And is why she has continued to fundraise for Cancer Research ever since. *“I was diagnosed on Valentine’s Day 2013, but there was nothing romantic about the result. I had Lobular Cancer, Hers2, and it had spread to my lymph nodes before I discovered the lump. The good news was that there was a treatment. New drugs, funded by Pharmac, had been available for around two years.”*

When Sheila was diagnosed with aggressive triple positive breast Cancer, her biggest concern was that two years after the Christchurch earthquakes, her house still only had three walls. *“Exposed to the elements, the fabric of my home was being destroyed and I had reached an impasse on the repair with my fourth insurance case manager. I had to move three times in this period. I felt like my life was being torn apart.”*

Sheila endured four rounds of chemotherapy, a mastectomy and three more rounds of chemotherapy, radiotherapy and a year of aggressive drug treatment. She lost her hair, her eyebrows and lashes, even her fingernails.

*“It wasn’t pleasant. You’re tired and I was nauseous all the time. I found walking helped and I drunk lots of green tea. But the treatment’s a life saver, so I’m not complaining. I was lucky that I had friends that came around. They walked with me and that helped. I kept active.”* Sheila said support groups, where you could share your journey with someone who understood were important and lasting friendships evolved from these groups. She also saw the hardship that some people endured.

*“I felt for the young ones. Some were solo mothers. They tried to be strong, but you’re so tired and they have children and housework, all those little things that they just can’t do.”*



*I’d like to see volunteers or some organisation that could help them. Some practical help that is just there and you don’t have to ask for because some people find it hard to ask for help.”*

Sheila wished she’d known more about the support the Cancer Society provided. *“Having it all there together, all the information is brilliant. To have somewhere to go where you’re diagnosed, where you can sort out your diagnosis, what it means, what to do next, it just helps so much.”*

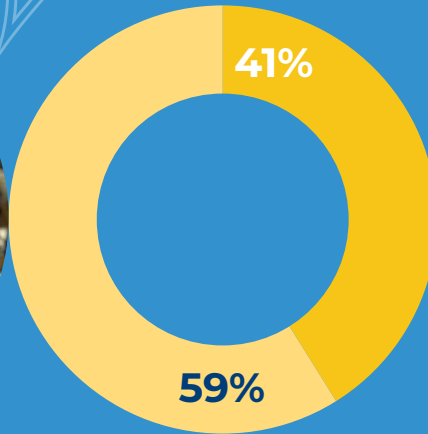
Sheila has come through her journey. She’s a survivor but one that wants others to have the benefits of research and new treatments and is walking the walk. *“I walked the El Camino trail as part of my recovery and to raise money for cancer research. I’ve baked and run stalls and I’ve written a book about my cancer journey and the El Camino also to raise money for cancer research. I also speak at events for a donation.”*

*“My dream is to raise \$2 million dollars for cancer research. I want to raise at least \$20,000 myself and inspire others to continue the journey. I want everyone to have the same benefits from cancer treatment advancements as I had.”*

Sheila’s book *Dancing Around Cancer* can be purchased for a \$20 donation and is available through the Southern Cancer Society with all the money going to cancer research. As is Sheila’s approach to life, it gives a precise and true account of what it takes to survive cancer, imbued with the humor that is her lens on life, *“Every cloud, even cancer, has a silver lining. Just look for those things as you progress through your journey. Connections and friendships, all those things that make us human. They’re there and they’re invaluable,”* Sheila says.

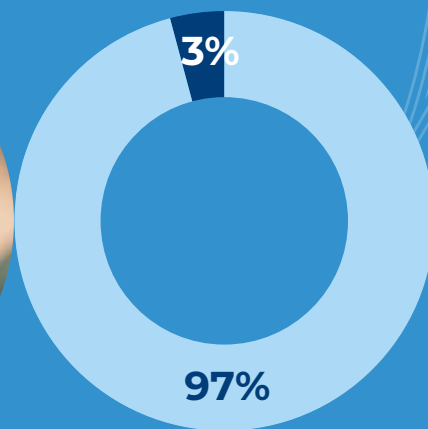
# Our Finances

Southern Cancer Society New Zealand, Canterbury-West Coast Division Incorporated



**Income for the year ended 31st March 2024**

- Non-Exchange Transaction Income
- Exchange Transaction Income



**Expenses for the year ended 31st March 2024**

- Costs of Providing Goods / Services
- Depreciation

Summary Statement of Comprehensive Revenue and Expense for the year ended 31 March 2024

	2024	2023
	\$	\$
<b>Revenue</b>		
Non-Exchange Transaction Income	5,583	9,300
Exchange Transaction Income	3,882	1,606
<b>Total Revenue</b>	<b>9,465</b>	<b>10,906</b>
<b>Expenses</b>		
Costs of Providing Goods/ Services	5,951	5,659
Depreciation	167	229
<b>Total Expenses</b>	<b>6,118</b>	<b>5,888</b>
Share of Encompass Health - JV - (Deficit)	(67)	-
<b>Net Operating Surplus</b>	<b>3,280</b>	<b>5,018</b>
Other Comprehensive Income	1,706	(244)
<b>Total Comprehensive Income &amp; Expense for the year</b>	<b>4,986</b>	<b>4,774</b>

## Summary Statement of Changes in Net Assets/ Equity as at 31 March 2024

	2024	2023
	\$	\$
Opening Equity Balance	35,147	30,373
Surplus for the year	4,986	4,774
Reclassification Rural Groups	(251)	-
Closing Equity balance	39,884	35,147
Comprising :		
Property Revaluation Reserve	1,706	-
Shares Revaluation Reserve	-	(244)
General Funds	38,177	35,390
<b>Total</b>	<b>39,884</b>	<b>35,147</b>

## Summary Statement of Financial Position as at 31 March 2024

	2024	2023
	\$	\$
<b>Equity</b>	<b>39,884</b>	<b>35,147</b>
Represented by :		
Current Assets	11,597	12,498
Non Current Assets	29,383	24,951
<b>Total Assets</b>	<b>40,980</b>	<b>37,449</b>
Current Liabilities	1,096	2,302
<b>Total Liabilities</b>	<b>1,096</b>	<b>2,302</b>
<b>Net Assets</b>	<b>39,884</b>	<b>35,147</b>

## Summary Cash Flow Statement for the year ended 31 March 2024

	2024	2023
	\$	\$
Net Cash Flow from Operating Activities	1,529	5,750
Net Cash Flow (to) Investing Activities	3,785	(10,985)
Net Cash from Financing Activities	(48)	(4)

## Notes to Summary Financial Statements

- These Summary Financial Statements have been extracted from the full statements which were authorised for issue by the Board on 6 September 2024.
- The specific disclosures included in these Summary Financial Statements have been extracted from the full Financial Statements for each relevant period.
- The full Financial Statements for each relevant period has been audited and an unqualified audit report has been issued for the year ended 31 March 2024.
- The Financial Statements of the Society have been prepared in accordance with Tier 2 Public Benefit Entity Reduced Disclosure Regime (Not-For-Profit).
- Cancer Society of New Zealand Canterbury-West Coast Division Incorporated is a public benefit entity and was incorporated on 11 May 1949.
- The presentation currency is New Zealand dollars rounded to the nearest thousand dollar.
- The Summary Financial Statements cannot be expected to provide as complete an understanding as provided by the full Financial Statements.
- The Summary Financial Statements have been prepared in accordance with PBE FRS 43 Summary Financial Statements as appropriate for a public benefit entity.
- The full Financial Statements can be obtained from the Chief Executive at Cancer Society of New Zealand Canterbury-West Coast Division Incorporated.
- The Summary Statement of Service Performance is included in the Chief Executive's Report.





**Southern  
Cancer Society**

Te Kāhui Matepukupuku o Te Waipounamu

# Our Centres

## Christchurch Centre

74 Langdons Road, Papanui, Christchurch 8053

P: **03 379 5835** E: [contact@southerncancer.org.nz](mailto:contact@southerncancer.org.nz)

## North Canterbury Centre

43 Church St, Rangiora 7400

P: **0800 226 695** E: [northcanty@southerncancer.org.nz](mailto:northcanty@southerncancer.org.nz)

## South Canterbury Centre

32 Memorial Avenue, PO Box 682, Timaru 7940

P: **03 688 0124** E: [southcanty@southerncancer.org.nz](mailto:southcanty@southerncancer.org.nz)

## Mid Canterbury Centre

122 Kermode Street, PO Box 296, Ashburton 7740

P: **03 307 7691** E: [midcanty@southerncancer.org.nz](mailto:midcanty@southerncancer.org.nz)

## West Coast Centre

98 High Street, PO Box 81, Greymouth 7840

P: **03 768 9557** E: [westcoast@southerncancer.org.nz](mailto:westcoast@southerncancer.org.nz)

